

# ANNUAL REPORT TO THE LGA EXECUTIVE

Special Interest Group on Radioactive Waste Management and Decommissioning

April 2011



## Introduction

This year has seen significant developments in nuclear legacy management and in NuLeAF's associated work programme. Developments include:

- adoption of a UK Strategy for managing Low Level Radioactive Wastes (LLW) from the nuclear industry
- consultation by the Nuclear Decommissioning Agency (NDA) on its Business Plan 2011-14 and revised Strategy;
- a significant programme of work by the West Cumbria Managing Radioactive Waste Safely (MRWS) Partnership to develop its views on whether a decision should be taken to participate in the siting process for a Geological Disposal Facility (GDF) for higher activity wastes;
- a public inquiry into the appeal against refusal of permission for the disposal of LLW to the hazardous waste landfill site at King's Cliffe in Northamptonshire;
- consultation on the management of UK plutonium stocks;
- consultation on a revised draft Nuclear National Policy Statement, covering the management of radioactive wastes from new nuclear power stations.

NuLeAF is closely involved in developments to ensure that local authority views and interests are recognised and addressed.

This report outlines NuLeAF's remit and objectives, support within local government, organisation and main activities.

## Remit and Objectives

NuLeAF's remit encompasses all aspects of the management of the UK's nuclear legacy. This includes the implications for legacy management of any developments (including construction of new nuclear power stations) that are likely to impact on that management.



NuLeAF's primary aims are:

- to provide a mechanism to identify, where possible, a common, local government viewpoint on nuclear legacy management issues;
- to represent that viewpoint, or the range of views of its member authorities, in discussion with national bodies, including Government, the NDA and the regulators;
- to seek to influence policy and strategy for nuclear legacy management in the interests of affected communities; and
- to develop the capacity of its member authorities to engage with nuclear legacy management at a local level.

At its AGM in October 2010, NuLeAF adopted an updated set of strategic objectives. Publication of the objectives on NuLeAF's website helps ensure that NuLeAF's work is open and transparent. The objectives can be found in Policy Statement 8 on NuLeAF's [website](#).

## **Local Government Support**

NuLeAF has 101 member authorities (same level as 2009-10) comprising 19 contributing authorities, 78 corresponding members and 4 NFLA co-optees. During the past year, two authorities (Stroud DC and Tameside MBC) ceased to be contributing members and reverted to corresponding membership. One corresponding member (Harrogate BC) has cancelled its corresponding membership and one, Derbyshire Dales DC became a corresponding member.

The list of member authorities is attached as Annex 1.

The benefits of becoming a contributing member authority include:

- A regular e-mail newsletter highlighting latest developments and updates
- Free registration at NuLeAF seminars and workshops.
- Voting rights at the NuLeAF Steering Group and AGM.

All member authorities are invited to attend the NuLeAF Steering Group and are kept informed about developments and activities through a regular e-bulletin (see below).

A decision was taken at the 2010 AGM not to increase the membership fee for the FY 2011-12 in light of the severity of local government financial restrictions.



## **Organisation**

### ***Steering Group***

NuLeAF's work is overseen by a Steering Group (SG) of elected members from member authorities. At the AGM in October 2010 Councillor Tim Knowles from Cumbria County Council was elected as Chair, and Councillor Neil Swannick of Manchester City Council re-elected as Vice Chair.

The SG meets on average four times a year. The following meetings were held during FY 10-11:

20 April, 2010	Local Government House, London
14 July, 2010	Cross Street Chapel, Manchester
20 October, 2010	Local Government House, London
25 January, 2011	Local Government House, London

Copies of reports to the SG can be found at [Steering Group Reports](#), as can minutes of the meetings.

### ***Staffing***

NuLeAF currently has two full-time staff members, employed on two year contracts:

Fred Barker	Executive Director
Catherine Draper	Business Support Co-ordinator

Both members of staff are hosted by Suffolk County Council, a leading NuLeAF member authority.

### ***Funding***

For FY 10-11, funding was secured from DECC (a reduced contribution from FY 2009-10), the Nuclear Decommissioning Authority (NDA) and from 19 contributing member local authorities. To ensure its independence, NuLeAF has a letter of agreement with each external funding body that specifies that "nothing in this letter of agreement shall in any way constrain or be regarded as exerting influence on the viewpoints reached by NuLeAF...".

A new income stream relating to commissioned work for the West Cumbria Managing Radioactive Waste Safely Partnership has been secured.

Partial funding for FY 11-12 has already been achieved. However, it is anticipated that income will be less than expenditure, and that reserves will have to be drawn



upon. Possibilities for increasing the level of commissioned work are being explored, particularly on radioactive waste management and new build.

### ***Working Groups***

NuLeAF has two Working Groups which provide detailed input from member authorities:

- (a) The Radioactive Waste Planning Group – evolved from the Low Level Waste Officer’s Working Group and discusses the development of strategies and associated issues in areas such as the coverage of radioactive waste in Minerals and Waste Development Frameworks, the disposal of radioactive waste to public landfill sites and associated planning issues.
- (b) Strategy Review Group (officers and members) – discusses overarching NuLeAF strategy issues.

The work of these two groups informs decision-making at the NuLeAF Steering Group and inputs to meetings with other national bodies.

### ***Liaison with the LGA***

Waste portfolio Members are kept informed with regular e-bulletins and are invited to attend Steering Group meetings.

### ***Scottish Local Authorities***

Steps are taken to ensure effective liaison with NuLeAF’s sister organisation north of the border, the Scottish Councils Committee on Radioactive Substances (SCCORS).

### ***New Nuclear Authorities Group***

As an organisation, NuLeAF does not take a view on whether new nuclear power stations should be built, but it does consider the decommissioning and radioactive waste management implications.

NuLeAF liaises with the New Nuclear Authorities Group, itself an LGA SIG, in respect of waste management issues for new build nuclear stations.

## Key Activities

### *Representational Activities*

NuLeAF's work programme has included:

- **The siting process for a Geological Disposal Facility (GDF) for higher activity radioactive wastes.** NuLeAF continues to represent the interests of local government through attendance at: the Geological Disposal Implementation Board; regular liaison meetings with Government and the NDA; and the Regulatory Interface Management Group.
- **Development and implementation of UK strategy for managing Low Level Waste.** NuLeAF participates in the NDA's LLW Strategy Group, which is being renamed the LLW Programme Delivery Group.
- **Responding to national consultations.** NuLeAF responded to 8 consultations during 2010-11. These were on:
  - The Government's proposed Waste Transfer Pricing methodology for new nuclear build
  - NDA's draft Business Plan
  - Government's revised Nuclear NPS
  - NDA's draft Strategy
  - The regulator's Generic Design Assessment for new nuclear stations
  - Government's Fixed Unit Price methodology for new nuclear build
  - Proposals for European legislation on the management of spent fuel and radioactive waste (EC)

All consultation responses can be viewed on the NuLeAF website [here](#).

- **Committee on Radioactive Waste Management (CoRWM).** NuLeAF maintains its links with CoRWM.
- **Representation at workshops and meetings.** This has included membership of the NDA National Stakeholder Group and the MoD Submarine Dismantling Project Strategic Environmental Assessment and Consultation Sub-Groups. Meetings also attended include the Environment Council review of NDA stakeholder engagement and an Environment Agency workshop on the Generic Design Assessment for new nuclear power stations.

## ***Support to Member Authorities***

This has included:

- **Dissemination of information and guidance** through use of the NuLeAF website (see Annex 2), circulation of e-bulletins (4 issues in FY 10-11), and publication of Case Studies (2 in FY 10-11). A Briefing Paper on UK industry Low Level Waste Strategy and Local Authority planning was also produced.
- **Opportunities for discussion:** a seminar was held in London (22 March) to brief local authority representatives on spatial planning and the implementation of strategy for managing nuclear industry LLW. Representatives from Low Level Waste Repository Ltd and DECC participated in panel discussions and presentations were given by officers from Suffolk, Northamptonshire and Cumbria County Councils. A seminar report will be posted on the NuLeAF website.
- **Improving engagement with the NDA, Site Licensee Companies and regulators:** NuLeAF has initiated dialogue between NDA, Site Licensee Companies, regulators and stakeholder local authorities on the need to establish a more effective means of engagement. The outcome is likely to be a number of regional meetings, to which NuLeAF will act as secretariat.
- **Advice and assistance:** meetings have been held with officers from member authorities in Somerset and Suffolk about contributing to their work programmes on the radioactive waste implications of building new nuclear power stations at Hinkley Point and Sizewell; with Northamptonshire County Council officers and counsel regarding the planning appeal inquiry for the application to dispose of LLW to King's Cliffe landfill site; and with officers from Plymouth CC regarding the Submarine Dismantling Project. In addition, NuLeAF makes an active, and remunerated, contribution to the work of the West Cumbria Managing Radioactive Waste Safely Partnership. The latter was set up in response to the 'expression of interest', by Copeland BC, Allerdale BC and Cumbria CC, in participating, without commitment, in the Geological Disposal Facility siting process.

## **Concluding Remarks**

Over the last year, NuLeAF has continued to make progress in engaging and influencing Government and the NDA in the complex arena of nuclear legacy management. NuLeAF has also strengthened its relationship with member authorities, which helps to ensure that the views of local government are carried into national policy and strategy development and implementation, and that services are provided that assist member authorities at a local level.

## NuLeAF Support as at 31 March 2010

### **Allerdale Borough Council - contributing**

Arun District Council - corresponding

Ashford District Council - corresponding

### **Barrow Borough Council - contributing**

Birmingham City Council - corresponding

Blackpool Borough Council - corresponding

Braintree Borough Council - corresponding

Breckland District Council - corresponding

Broadland District Council - corresponding

Bromsgrove District Council - corresponding

Caerphilly County Borough Council - corresponding

Carlisle City Council – corresponding

Cornwall Council - corresponding

Chelmsford Borough Council - corresponding

Chesterfield Borough Council – corresponding

Cheshire West and Chester Council - corresponding

### **Copeland Borough Council – contributing**

### **Cumbria County Council - contributing**

Dacorum District Council - corresponding

Denbighshire County Council – corresponding

Derby City Council – corresponding

Derbyshire Dales District Council - corresponding

### **Dorset County Council – contributing**

Dorset Fire and Rescue – corresponding

Durham County Council - corresponding

Eden District Council - corresponding

Essex County Council- corresponding

Flintshire County Council – NFLA Co-optee

Forest of Dean District Council - corresponding

Forest Heath District Council - corresponding

Fylde Borough Council - corresponding

Gosport Borough Council - corresponding

Great Yarmouth Borough Council - corresponding

Greater London Authority - corresponding

Gwynedd County Council - corresponding

Halton Borough Council – corresponding

### **Hampshire County Council - contributing**

Harlow District Council - corresponding

### **Hartlepool Borough Council - contributing**

Hyndburn Borough Council - corresponding  
Kent County Council - corresponding  
Kings Lynn & West Norfolk District Council - corresponding  
**Lancashire County Council - contributing**  
Lancaster City Council - corresponding  
Leeds City Council - corresponding  
Lewes District Council - corresponding  
Liverpool City Council - corresponding  
London Borough of Bromley - corresponding  
London Borough of Hackney - corresponding  
London Borough of Harrow - corresponding  
London Borough of Newham - corresponding  
London Borough of Tower Hamlets - corresponding  
Maldon District Council – corresponding  
**Manchester City Council - contributing**  
Melton Borough Council – corresponding  
Merseyside Environmental Advisory Service - corresponding  
Newcastle-under-Lyme Borough Council - corresponding  
Newport City Council – NFLA Co-optee  
Norfolk County Council – corresponding  
Northamptonshire County Council - corresponding  
North East Derbyshire District Council - corresponding  
North Norfolk District Council - corresponding  
Norwich City Council - corresponding  
Nottinghamshire County Council – corresponding  
Northumberland County Council - corresponding  
Oldham Metropolitan Borough Council – corresponding  
**Oxfordshire County Council - contributing**  
Pembrokeshire County Council - corresponding  
**Plymouth City Council - contributing**  
Preston City Council – NFLA Co-optee  
Purbeck District Council - corresponding  
Rotherham Metropolitan Borough Council – NFLA Co-optee  
Rutland County Council - corresponding  
Scarborough District Council - corresponding  
**Sedgemoor District Council – contributing**  
**Shepway District Council - contributing**  
Solihull Metropolitan Borough Council - corresponding  
**Somerset County Council – contributing**  
**South Gloucester Council – contributing**  
South Lakeland District Council - corresponding  
Southampton City Council - corresponding  
South Norfolk District Council – corresponding  
Spelthorne Borough Council - corresponding



Staffordshire County Council – corresponding  
Stroud District Council - corresponding  
**Suffolk Coastal District Council – contributing**  
**Suffolk County Council – contributing**  
Tameside Metropolitan Borough Council - corresponding  
Taunton Deane Borough Council - corresponding  
Tendring District Council - corresponding  
Tunbridge Wells District Council - corresponding  
Vale of the White Horse District Council - corresponding  
Wansbeck District Council - corresponding  
Waveney District Council - corresponding  
West Berkshire District Council - corresponding  
West Lancashire District Council - corresponding  
West Lindsey District Council - corresponding  
**West Somerset District Council – contributing**  
Worcestershire County Council - corresponding  
**Ynys Mon County Council – contributing**

## National Parks Authorities

Lake District National Park Authority  
North Yorkshire Moors National Park Authority  
Snowdonia National Park Authority

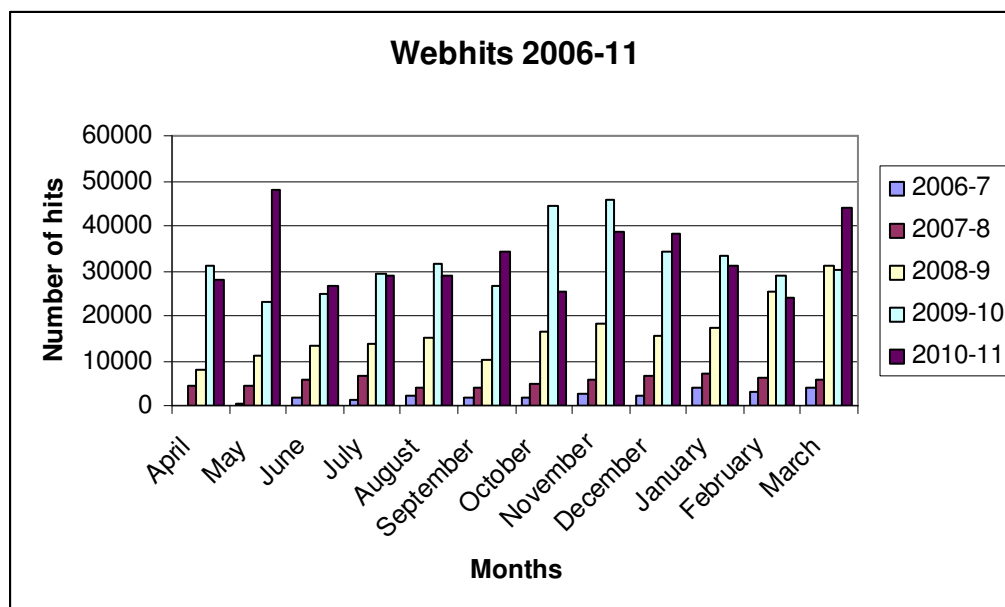
### **Total - 101 members**

19 CONTRIBUTING MEMBERS  
78 CORRESPONDING  
4 NFLA CO-OPTees

## Statistics for the Use of NuLeAF Website

April 2010 to March 2011

	April	May	June	July	Aug	Sept	Oct	Nov	Dec	Jan	Feb	Mar
2006-07	-	308	1606	1503	2364	1687	1794	2734	2209	4059	2922	4066
2007-08	4561	4410	5562	6795	3977	3784	4980	5498	6638	7252	6131	5789
2008-09	8221	10902	13235	13913	15305	10292	16545	18257	15448	17196	25470	31265
2009-10	31015	23297	24801	29306	31688	26838	44567	45976	34205	33271	29017	30390
2010-11	28101	48075	26756	28988	29029	34379	25387	38712	38427	31208	24003	44045



The NuLeAF website was established in May 2006. It is constantly monitored and updated to ensure that it provides up to date information for member authorities.