

ANNUAL REPORT TO THE LGA EXECUTIVE

Special Interest Group on Radioactive Waste Management and Decommissioning

April 2010



Introduction

This year has seen significant developments in nuclear legacy management and in NuLeAF's associated work programme. The developments in nuclear legacy management include:

- the establishment and development of the West Cumbria Managing Radioactive Waste Safely (MRWS) Partnership to advise on whether a decision should be taken to participate in the siting process for a Geological Disposal Facility (GDF) for higher activity wastes;
- consultation on a UK Strategy for the management of low level radioactive waste from the nuclear industry;
- discussions about ways of optimising the treatment and storage of Intermediate Level Wastes in England and Wales; and
- the launch of consultation on the Scottish government's proposed policy for the management of Higher Activity Wastes (HAW).

A draft Nuclear National Policy Statement was also published dealing with the issue of new nuclear build.

NuLeAF is closely involved in developments to ensure that local authority views and interests are recognised and addressed.

This report outlines NuLeAF's remit and objectives, support within local government, organisation and main activities.

Remit and Objectives

NuLeAF's remit encompasses all aspects of the management of the UK's nuclear legacy. This includes the implications for legacy management of any developments (including construction of new nuclear power stations) that are likely to impact on that management.

NuLeAF's primary aims are:

- to provide a mechanism to identify, where possible, a common, local government viewpoint on nuclear legacy management issues;

- to represent that viewpoint, or the range of views of its member authorities, in discussion with national bodies, including Government, the NDA and the regulators;
- to seek to influence policy and strategy for nuclear legacy management in the interests of affected communities; and
- to develop the capacity of its member authorities to engage with nuclear legacy management at a local level.

At its AGM in October 2009, NuLeAF adopted an updated set of strategic objectives. Publication of the objectives on NuLeAF's website helps ensure that NuLeAF's work is open and transparent. The objectives can be found in the Policy Statement on NuLeAF's [website](#).

Local Government Support

NuLeAF has 101 member authorities (103 in 2008-09) comprising 21 contributing authorities, 76 corresponding members and 4 NFLA co-optees. During the past year, two authorities (Chelmsford DC and South Lakeland BC) ceased to be contributing members and reverted to corresponding membership. Four authorities (Derby City Council, Merseyside Environmental Advisory Service, Northamptonshire County Council and Worcestershire County Council) became corresponding members as a result of participating in a seminar programme in May 2009. Those corresponding authorities which have become unitaries have maintained their membership status.

The list of member authorities is attached as Annex 1.

The benefits of becoming a contributing member authority include:

- A monthly e-mail newsletter highlighting latest developments and updates
- Free registration at NuLeAF seminars and workshops.
- Voting rights at the NuLeAF Steering Group and AGM.

All member authorities are invited to attend the NuLeAF Steering Group and are kept informed about developments and activities through a regular e-bulletin (see below).

A decision was taken at the 2009 AGM not to increase the membership fee for the FY 2010-11 in light of local government financial restrictions.

Organisation

Steering Group

NuLeAF's work is overseen by a Steering Group (SG) of elected members from member authorities. At the AGM in October 2009 Councillor Allan Holliday from Copeland Borough Council was re-elected as Chair, and Councillor Neil Swannick of Manchester City Council elected as Vice Chair.

The SG meets on average four times a year. The following meetings were held during FY 09-10:

| | |
|------------------|-----------------------------|
| 28 April, 2009 | The Wave, Maryport, Cumbria |
| 15 July, 2009 | County Hall, Oxford |
| 15 October, 2009 | King's College, London |
| 27 January, 2010 | Town Hall, Manchester |

Copies of the reports can be found at [Steering Group Reports](#), as can minutes of the Steering Group meetings.

Staffing

NuLeAF currently has two full-time staff members, employed on two year contracts:

| | |
|------------------|--------------------------------------|
| Fred Barker | Executive Director |
| Catherine Draper | Administrator and Personal Assistant |

Both members of staff are hosted by Suffolk County Council, a leading NuLeAF member authority. It was agreed at the 2009 AGM that both members of staff would be offered a two year extension to their contracts which currently expire in 2010.

Funding

For FY 09-10, funding was secured from DECC, the Nuclear Decommissioning Authority (NDA) and from 21 contributing member local authorities. To ensure its independence, NuLeAF has a letter of agreement with each external funding body that specifies that "nothing in this letter of agreement shall in any way constrain or be regarded as exerting influence on the viewpoints reached by NuLeAF...".

Partial funding for FY 10-11 has already been secured. However, due to government spending restrictions, continued funding is under review. NuLeAF is investigating the possibility of securing alternative sources of funding.

Working Groups

NuLeAF has two Working Groups which provide detailed input from member authorities:

- (a) Low Level Waste Officer Working Group - discusses the development of strategies and associated issues in areas such as the coverage of radioactive waste in Minerals and Waste Development Frameworks, and the disposal of radioactive waste to public landfill sites.

- (b) Strategy Review Group (officers and members) – discusses overarching NuLeAF strategy issues.

The work of these two groups informs decision-making at the NuLeAF Steering Group and inputs to meetings with other national bodies.

Liaison with the LGA

Following the publication of the consultation document on a proposed UK Strategy for the management of Low Level Radioactive Waste by the NDA, NuLeAF submitted a [written report](#) to the Environment Board.

NuLeAF also submitted material relevant to the briefing for Cllr Richard Kemp who appeared before the Commons Select Committee to give evidence on the Energy National Policy Statements.

Scottish Local Authorities

A Scottish Councils' Committee on Radioactive Substances (SCCORS) was re-launched on 1 May, 2009. Steps are taken to ensure effective liaison with the re-launched group.

Key Activities

Representational Activities

NuLeAF's work programme has included:

- **The siting process for a Geological Disposal Facility (GDF) for higher activity radioactive wastes.** NuLeAF has contributed through participation in three sets of meetings: liaison meetings with Government and the NDA; the Regulatory Interface Management Group and as a member of the West Cumbria Managing Radioactive Waste Safely Partnership. The latter was set up in response to the 'expression of interest', by Copeland BC, Allerdale BC and Cumbria CC, in participating, without commitment, in the Geological Disposal Facility siting process. NuLeAF makes an active contribution to the work of the Partnership.
- **Development of NDA strategy for managing Low Level Waste.** NuLeAF participates in the NDA's LLW Strategy Group. In June 2009, NDA began its consultation on the UK Strategy for the management of Low Level Radioactive Waste. Prior to the consultation NuLeAF organised a suite of seminars around the country (see Capacity Building Activities). NuLeAF submitted comments on the consultation and will produce a Briefing Paper on the published strategy.

- **Development of other NDA topic strategies.** NuLeAF has engaged in the NDA's reviews of other topic strategies, for example, on options for ILW management and plutonium management.
- **Responding to national consultations.** NuLeAF responded to 10 consultations during 09-10. These were on:
 - CoRWM's geological disposal report
 - the Environmental Permitting Regulations
 - Proposed changes to the Exemption Regime
 - CoRWM's Research & Development report
 - Proposed UK Low Level Waste Strategy
 - the NDA Business Plan 2010-13
 - the proposed justification decision on new nuclear build
 - the draft nuclear National Policy Statement (NPS)
 - the proposed Community Infrastructure Levy
 - the Scottish Government proposed policy on Higher Activity Wastes (HAW)

All consultation responses can be viewed on the NuLeAF website [here](#).

- **Meetings with the Committee on Radioactive Waste Management (CoRWM).** NuLeAF has maintained its links with CoRWM. The Executive Director gave a presentation to CoRWM in December 2009 on NuLeAF's objectives and activities.
- **Representation at workshops and meetings.** This has included membership of the NDA National Stakeholder Group and Low Level Waste Strategy Group, the MoD Submarine Dismantling Project Steering Group and SD: SPUR. Meetings also attended include workshops on: options for the management of high volume Very Low Level Waste, new nuclear build, environmental exemptions and the environmental permitting programme and a meeting on the management of Higher Activity Wastes in Scotland. NuLeAF representatives have also participated in workshops organised by Magnox on the interim storage of radioactive wastes.

Capacity Building Activities

These have included:

- **Dissemination of information and guidance** through use of the NuLeAF website (see Annex 2 for the growth in use), circulation of e-bulletins (4 issues in FY 09-10), and publication of Case Studies (4 in FY 09-10, with a further 8 planned, see Annex 3). Briefing Papers on the NDA Socio Economic Fund, the Use of Planning Obligations and a guide for newly elected members were also produced. The Executive Director (ED) participated in a workshop organised to familiarise Northamptonshire County Council Development Control Committee members with the issues surrounding the application for disposal of radioactive

waste to a landfill site within their area. The ED also gave a presentation to the Planning Officers Society and spoke at the Recycling and Waste Management Exhibition in Birmingham.

- **Opportunities for discussion:** a series of seminars were held in Manchester (7 May), London (12 May) and Taunton (14 May) to brief local authority representatives on proposals for new strategies for managing Low Level Waste. Representatives from the NDA and Non-nuclear Industry Project Board were able to receive direct feedback on their proposals from a local authority audience. The seminar report is available to view on the [website](#) as are the presentations given.
- **Involvement in European projects.** This included representing the UK Stakeholder Group of the COWAM-In-Practice (CIP) project at an international meeting in May 2009. The CIP project aims to improve the governance of radioactive waste and also involves stakeholders from France, Romania, Slovenia and Spain. The project has now concluded and NuLeAF representatives will be attending a roundtable in Luxembourg in April 2010, where results will be presented. The ED also attended the CARL workshop in West Cumbria in the October 2009. The CARL project looked at the decision-making process relating to radioactive waste management, how social science issues affected these and how they could be developed to enable greater stakeholder involvement, while meeting legislative requirements. Two NuLeAF representatives attended the Forum on Stakeholder Conference (FSC) workshop in Bure, France in April 2009. The FSC project facilitates the sharing of experience in addressing the societal dimension of radioactive waste management and explores means of ensuring an effective dialogue with the public with a view to strengthening confidence in the decision-making processes. Involvement in these projects helps to ensure that international good practice is taken into account by local government in the UK.

Nuclear New Build

NuLeAF has adopted the following objectives relating to nuclear new build:

If Government continues to encourage the building of new nuclear power stations, to seek to ensure that its National Policy Statement is open and transparent about the interactions between new nuclear build and nuclear legacy management.

To seek to ensure that proposals for radioactive waste management and decommissioning of new nuclear power stations do not prejudice effective management of the nuclear legacy.

To promote debate about the interactions with nuclear legacy management and the pros and cons of utilising these interactions to the benefit of nuclear legacy management. Any such use should be in accordance with the principle that the companies concerned meet the full cost of decommissioning and radioactive waste management liabilities that arise from new nuclear power stations. This debate

should include how a more coordinated “across site” approach could be taken in locations that have or are proposed to have multiple licensed nuclear sites.

To these ends, as noted above, NuLeAF has commented on the draft Nuclear NPS and is liaising with NDA and those authorities most directly affected by proposals for new nuclear power stations.

Concluding Remarks

Over the last year, NuLeAF has continued to make progress in engaging and influencing Government and the NDA in the complex arena of nuclear legacy management. NuLeAF has also strengthened its relationship with member authorities, which helps to ensure that the views of local government are carried into national policy and strategy development and implementation, and that services are provided that assist member authorities at a local level.

NuLeAF Support as at 31 March 2010

Allerdale Borough Council - contributing

Arun District Council - corresponding

Ashford District Council - corresponding

Barrow Borough Council - contributing

Birmingham City Council - corresponding

Blackpool Borough Council - corresponding

Braintree Borough Council - corresponding

Breckland District Council - corresponding

Broadland District Council - corresponding

Bromsgrove District Council - corresponding

Caerphilly County Borough Council - corresponding

Carlisle City Council – corresponding

Cornwall Council - corresponding

Chelmsford Borough Council - corresponding

Chesterfield Borough Council – corresponding

Cheshire West and Chester Council - corresponding

Copeland Borough Council – contributing

Cumbria County Council - contributing

Dacorum District Council - corresponding

Denbighshire County Council – corresponding

Derby City Council - corresponding

Dorset County Council – contributing

Dorset Fire and Rescue – corresponding

Durham County Council - corresponding

Eden District Council - corresponding

Essex County Council- corresponding

Flintshire County Council – NFLA Co-optee

Forest of Dean District Council - corresponding

Forest Heath District Council - corresponding

Fylde Borough Council - corresponding

Gosport Borough Council - corresponding

Great Yarmouth Borough Council - corresponding

Greater London Authority - corresponding

Gwynedd County Council - corresponding

Halton Borough Council – corresponding

Hampshire County Council - contributing

Harlow District Council - corresponding

Harrogate Borough Council – corresponding

Hartlepool Borough Council - contributing

Hyndburn Borough Council - corresponding

Kent County Council - corresponding
Kings Lynn & West Norfolk District Council - corresponding
Lancashire County Council - contributing
Lancaster City Council - corresponding
Leeds City Council - corresponding
Lewes District Council - corresponding
Liverpool City Council - corresponding
London Borough of Bromley - corresponding
London Borough of Hackney - corresponding
London Borough of Harrow - corresponding
London Borough of Newham - corresponding
London Borough of Tower Hamlets - corresponding
Maldon District Council – corresponding
Manchester City Council - contributing
Melton Borough Council – corresponding
Merseyside Environmental Advisory Service - corresponding
Newcastle-under-Lyme Borough Council - corresponding
Newport City Council – NFLA Co-optee
Norfolk County Council – corresponding
Northamptonshire County Council - corresponding
North East Derbyshire District Council - corresponding
North Norfolk District Council - corresponding
Norwich City Council - corresponding
Nottinghamshire County Council – corresponding
Northumberland County Council - corresponding
Oldham Metropolitan Borough Council – corresponding
Oxfordshire County Council - contributing
Pembrokeshire County Council - corresponding
Plymouth City Council - contributing
Preston City Council – NFLA Co-optee
Purbeck District Council - corresponding
Rotherham Metropolitan Borough Council – NFLA Co-optee
Rutland County Council - corresponding
Scarborough District Council - corresponding
Sedgemoor District Council – contributing
Shepway District Council - contributing
Solihull Metropolitan Borough Council - corresponding
Somerset County Council – contributing
South Gloucester Council – contributing
South Lakeland District Council - corresponding
Southampton City Council - corresponding
South Norfolk District Council – corresponding
Stroud District Council - contributing
Spelthorne Borough Council - corresponding
Staffordshire County Council – corresponding
Suffolk Coastal District Council – contributing

Suffolk County Council – contributing
Tameside Metropolitan Borough Council - contributing
Taunton Deane Borough Council - corresponding
Tendring District Council - corresponding
Tunbridge Wells District Council - corresponding
Vale of the White Horse District Council - corresponding
Wansbeck District Council - corresponding
Waveney District Council - corresponding
West Berkshire District Council - corresponding
West Lancashire District Council - corresponding
West Lindsey District Council - corresponding
West Somerset District Council – contributing
Worcestershire County Council - corresponding
Ynys Mon County Council – contributing

National Parks Authorities

Lake District National Park Authority
North Yorkshire Moors National Park Authority
Snowdonia National Park Authority

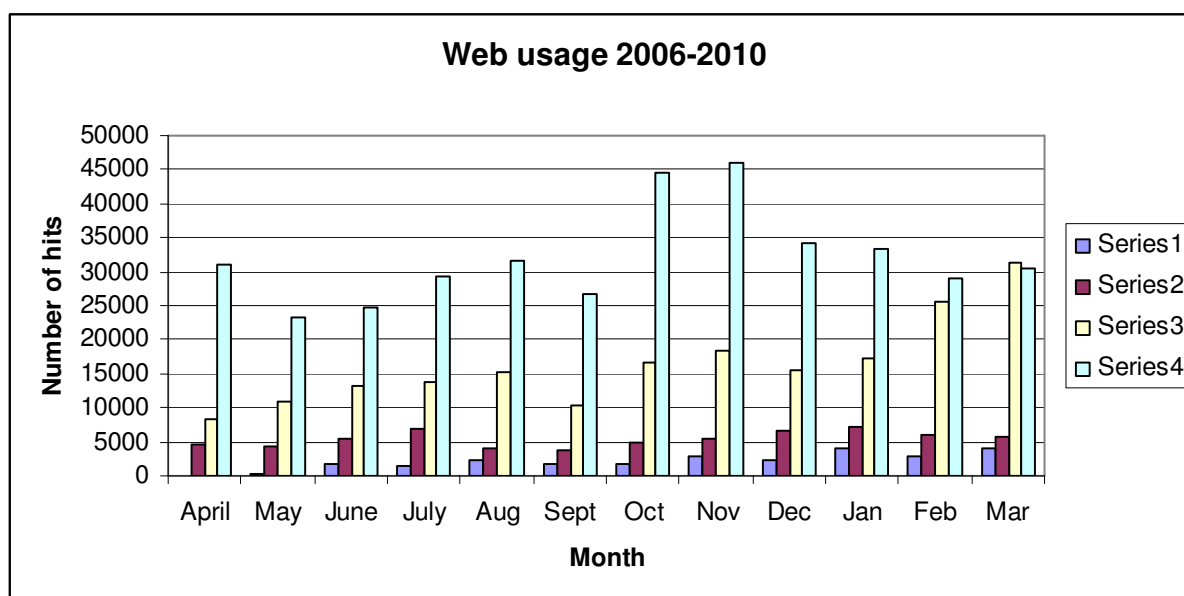
Total - 101 members

21 CONTRIBUTING MEMBERS
76 CORRESPONDING
4 NFLA CO-OPTees

Statistics for the Use of NuLeAF Website

April 2008 to March 2009

| | April | May | June | July | Aug | Sept | Oct | Nov | Dec | Jan | Feb | Mar |
|---------|-------|-------|-------|-------|-------|-------|-------|-------|-------|-------|-------|-------|
| 2006-07 | - | 308 | 1606 | 1503 | 2364 | 1687 | 1794 | 2734 | 2209 | 4059 | 2922 | 4066 |
| 2007-08 | 4561 | 4410 | 5562 | 6795 | 3977 | 3784 | 4980 | 5498 | 6638 | 7252 | 6131 | 5789 |
| 2008-09 | 8221 | 10902 | 13235 | 13913 | 15305 | 10292 | 16545 | 18257 | 15448 | 17196 | 25470 | 31265 |
| 2009-10 | 31015 | 23297 | 24801 | 29306 | 31688 | 26838 | 44567 | 45976 | 34205 | 33271 | 29017 | 30390 |



The NuLeAF website was established in May 2006. New features have been added in the year 2009-10 including a new section on Low Level Waste Management, industry projects and an updated section on Site Stakeholder Groups.

Case Studies published in 2009-10

Case Study 6: Cumbria Minerals and Waste Development Framework Inspector's Examination

Case Study 7: Dounreay Community Benefit Fund

Case Study 8: Chapelcross Socio-Economic Funding

Case Study 9: West Cumbria Partnership Early Steps

In preparation:

- Lillyhall, Keekle Head, Clifton Marsh and King's Cliffe landfill authorisations
- Springfields Very Low Level Waste Disposal Planning Application
- Geological Disposal Facility Community Benefits Package
- Geological Disposal Facility geological screening process
- Intermediate Level Waste ministores
- Fuel Element Debris dissolution project