



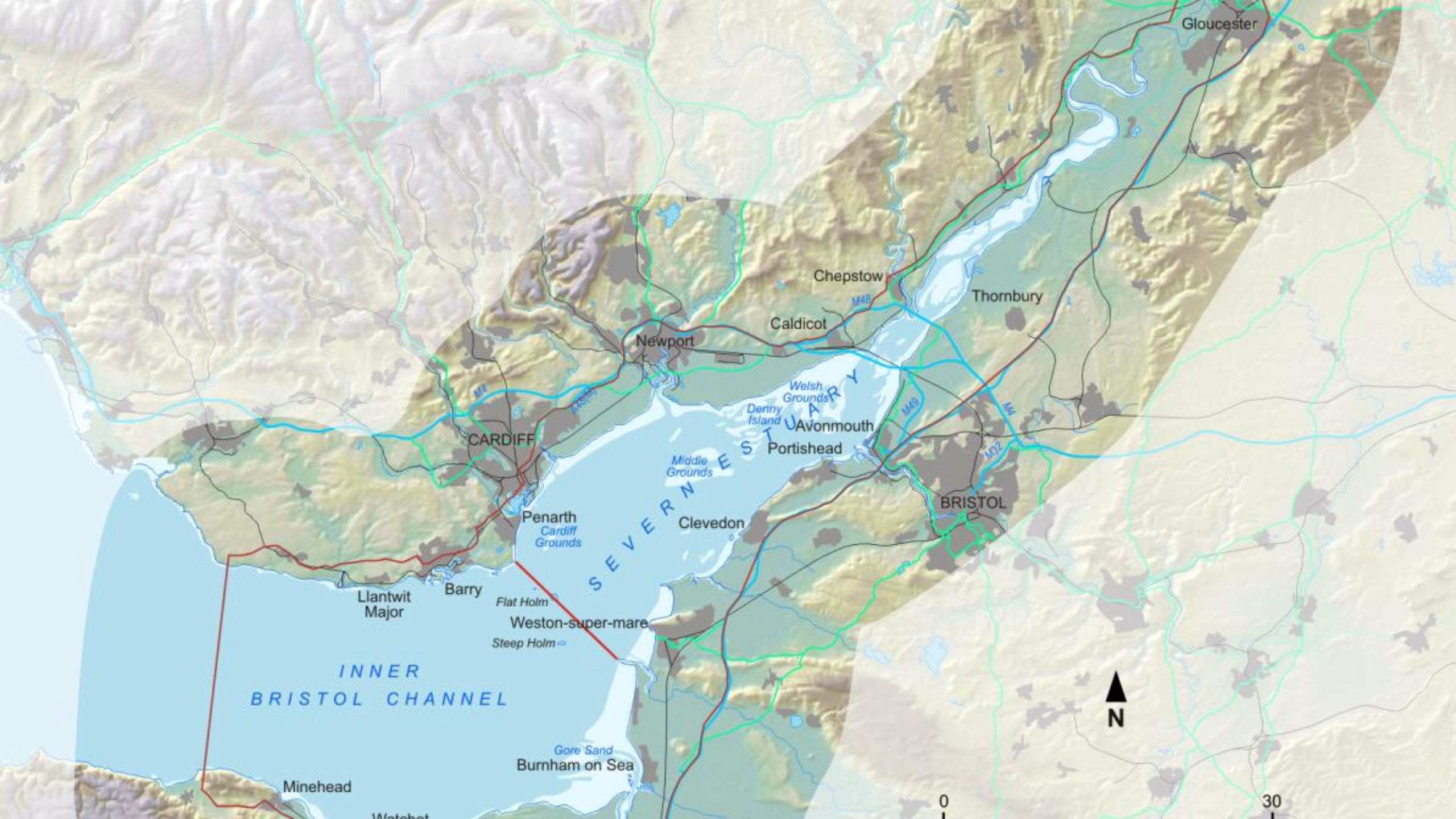
# Nuleaf – Radioactive Waste Planning Group.

## Priorities for the Severn Estuary

John Harrison

Chair Severn Estuary Partnership





Gloucester

Chepstow

Thornbury

Caldicot

Newport

CARDIFF

WELSH  
GROUND  
Denny  
Island  
Avonmouth

Portishead

BRISTOL

Penarth  
Cardiff  
Grounds

Clevedon

Llantwit  
Major

Barry

Flat Holm

Weston-super-mare

Steep Holm

INNER  
BRISTOL CHANNEL

Gore Sand  
Burnham on Sea

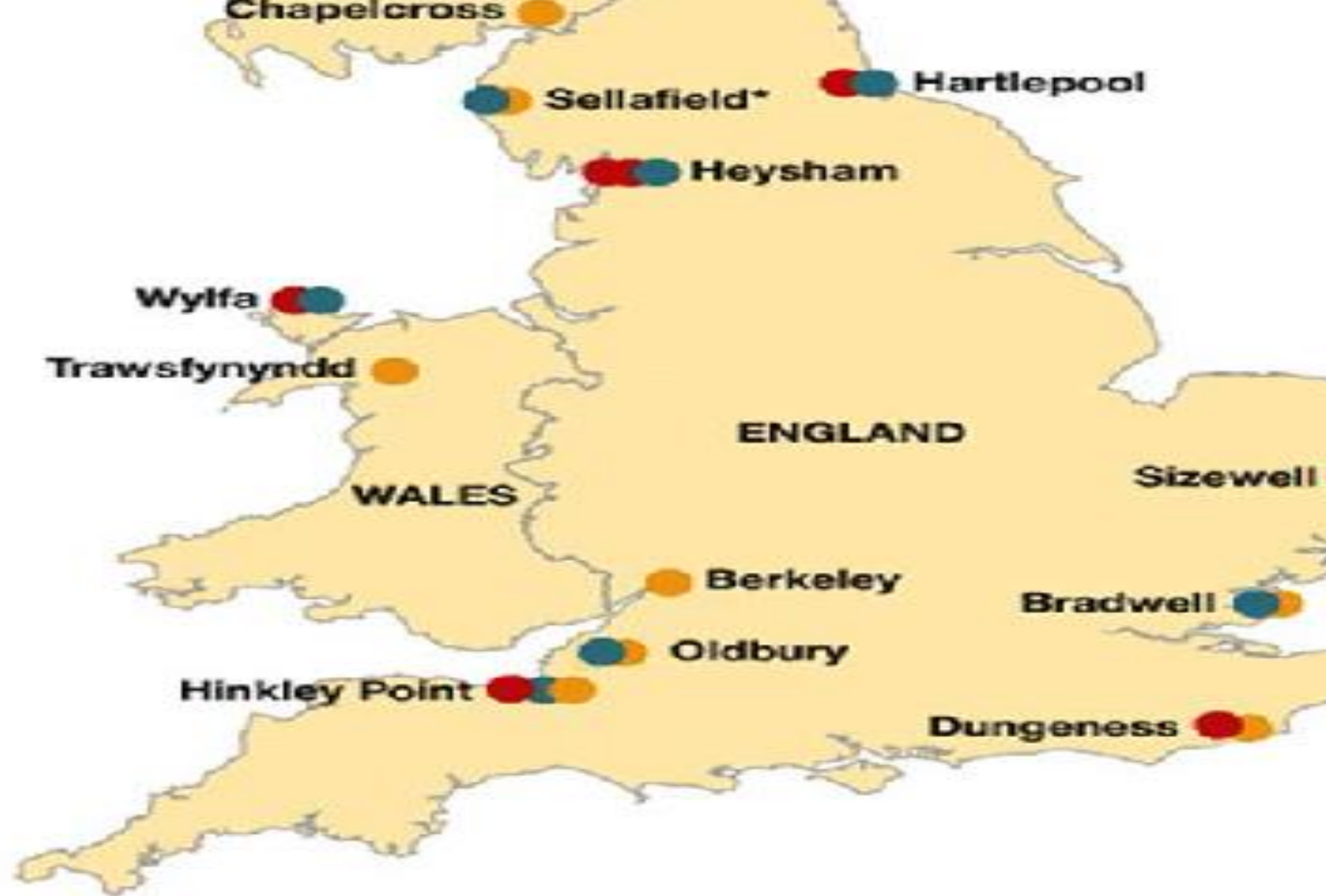
Minehead

Witchet



0

30

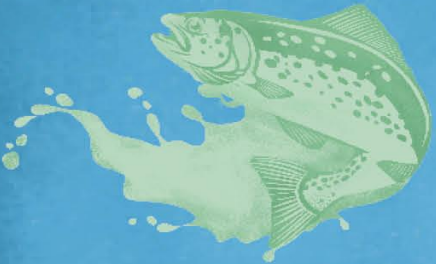




UK's Largest  
coastal plain estuary



Largest  
tidal range in Europe



Over 110  
fish species



100,000 Birds  
winter feeding ground



Nature Protected  
in designated areas



Blue Carbon  
locked up in habitats



Iconic  
surrounding landscapes

# The Severn Estuary Partnership

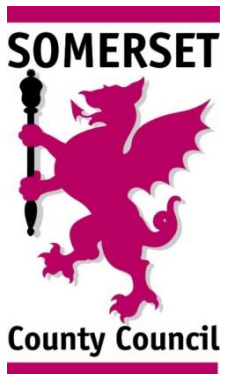
To establish and embed a set of **'common principles'** for **sustainable estuary use** via Partners' strategies, policies and action plans

To **facilitate effective communication** across and between organisations and individuals and borders

To act as a **co-ordinating body** to assist the effective & efficient delivery of agreed estuary-wide actions

To **add value and fill gaps** in effective estuary management, providing extra capacity when required

To **promote and publicise** the estuary at local, national and international level



# Severn Estuary Partnership Strategy 2017 -2027



1. Achieving a Sustainable Marine Economy

2. Ensuring a Strong, Healthy and Just Society

3. Living Within Environmental Limits

4. Promoting Good Governance

5. Using Sound Science Responsibly

The Environment  
(Wales) Act 2016

Environment Act 2021

UK Marine Policy  
Statement

UK Marine Strategy

National Flood and  
Coastal Erosion Risk  
Management (FCERM)  
Strategy for England

National Strategy for  
Flood and Coastal  
Erosion Risk  
Management in Wales

Well-being of Future  
Generations (Wales)  
Act 2015

Marine and Coastal  
Access Act 2019

Wales National  
Marine Plan

South West Marine  
Plan

River Basin  
Management Plans

Shoreline  
Management Plans

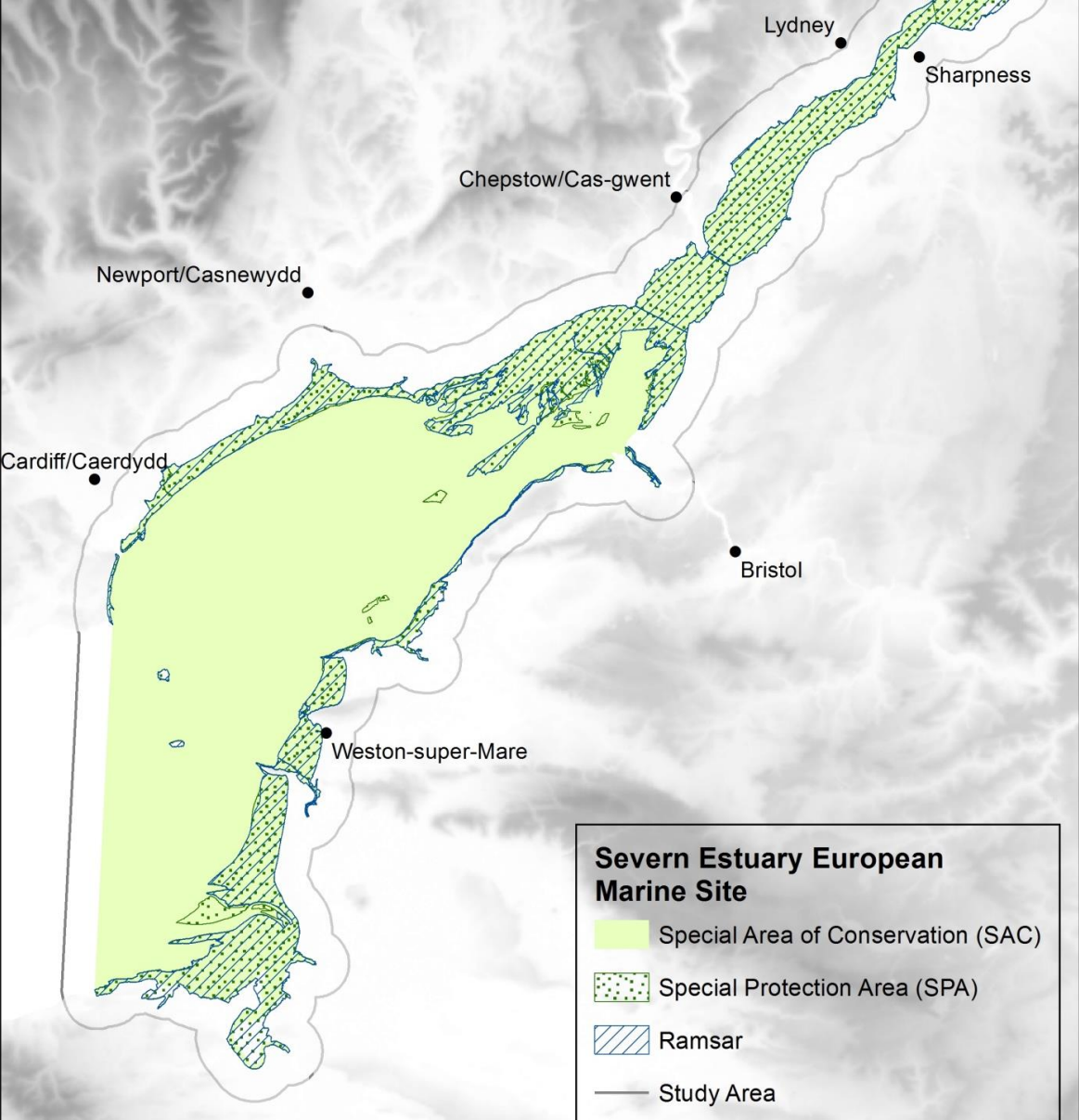
Water Framework  
Directive

Severn Estuary  
Strategy 2017-2023

National Planning and  
Policy framework  
(2019)

Climate Change Act  
2008

# Priorities for the estuary – protecting and enhancing the natural environment





# Priorities for the estuary – supporting sustainable development



# Coastal Partnerships Network



Heritage Coast  
Sunderland-Durham-Hartlepool



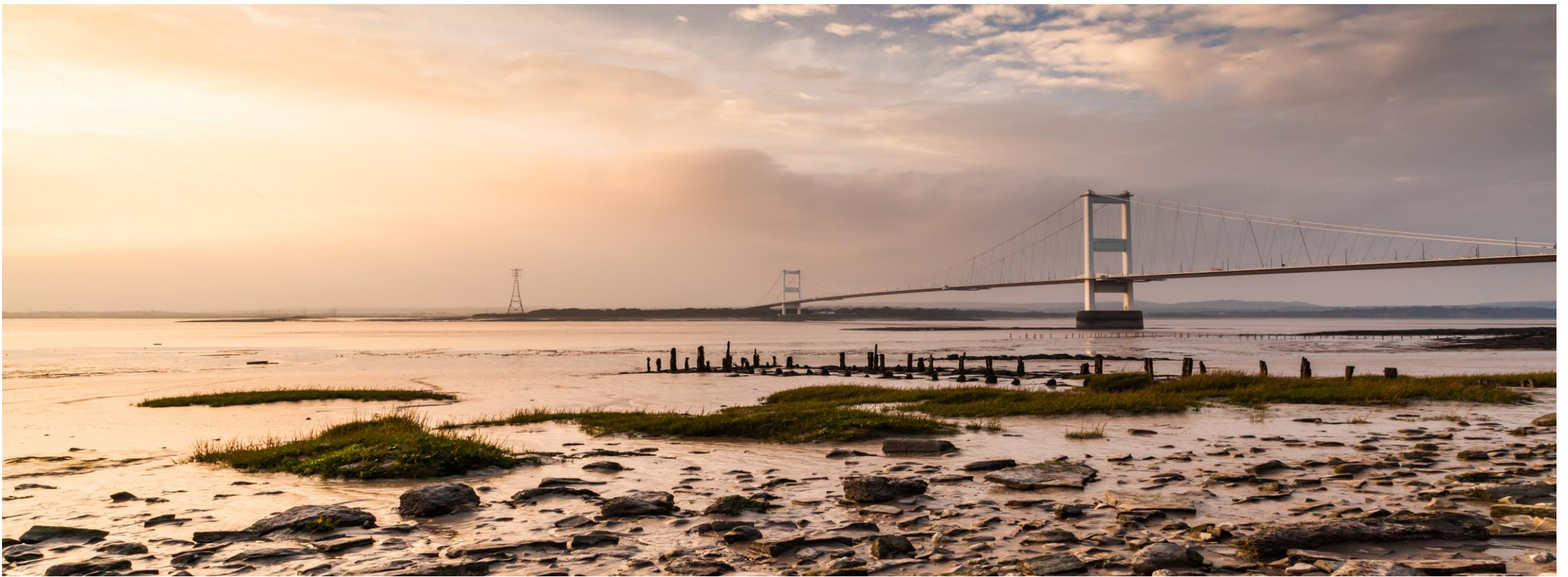
Solway Firth  
Partnership



Tyne Estuary Partnership

*'Cross-sectoral, place-based partnerships advocating the implementation of the ecosystem approach, sustainable use of marine resources and integrated, coordinated management across a stretch of coastline or estuarine system'*





**Thank You - Any Questions ?**

**Email - [severn@cardiff.ac.uk](mailto:severn@cardiff.ac.uk)**

**Web - [severnestuarypartnership.org.uk](http://severnestuarypartnership.org.uk)**

