



Creating Jobs & Skills

September 2022

Foreword

Delivering a permanent solution for the UK's higher-activity radioactive waste is one of the most significant challenges and opportunities of our time. Developing a Geological Disposal Facility (GDF) to dispose of our most hazardous radioactive waste, will be one of the biggest infrastructure projects the UK has ever seen. This highly engineered facility will generate long-term opportunities for the eventual host community, its local economic region and beyond. It will also make a major contribution to the environment by safely disposing of waste which otherwise would have to be stored and maintained for thousands of years above ground.

Karen Wheeler
Deputy Chief Executive
Officer / Major Capital
Programmes Director

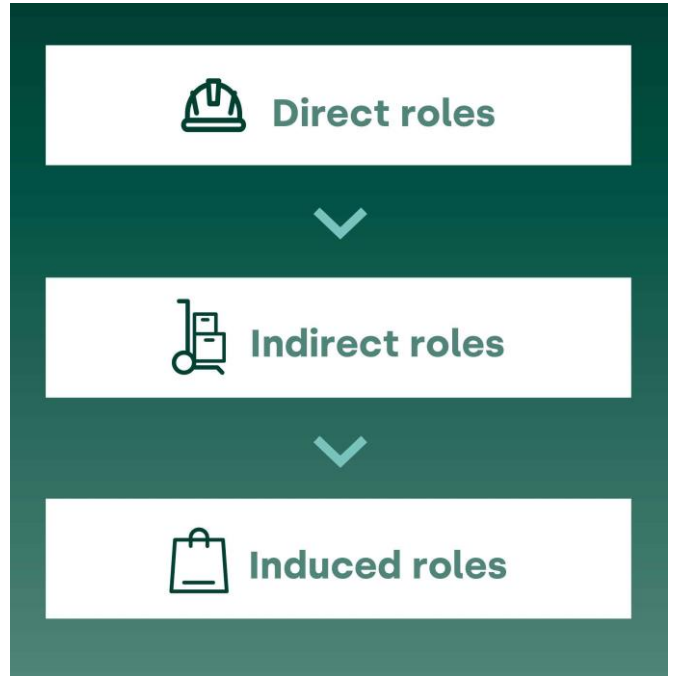


Boosting the economy

Well-paid jobs will be created within the host community.

The impact in terms of direct and indirect employment and skills development will be felt across the region.

In addition to direct employment at the facility, a GDF will generate indirect employment in the supply chain and induced employment by boosting local spending power.



Employing and upskilling a host community

At the heart of this infrastructure project is the drive to recruit locally, use local contractors and to build local skills and expertise.

Most of the jobs created during construction and operation could and should be locally based.

Jobs will range from those that don't require any qualifications, apprenticeships, those accessible from GCSE level, through to highly skilled ones.

Three quarters of these roles will be open to those with qualifications at the equivalent of A Level or below.



Community benefits

 4,000

Major job creation

A GDF is expected to create more than 4,000 jobs within the first 25 years.




Local jobs

We estimate that most of the jobs created during construction and operation could and should be locally based.



Train locally

NWS is committed to training, support, and roles for the local community. In the same way as other major infrastructure projects such as Crossrail and the GDF project in Sweden.

 175 Years

Jobs for generations

Work on a GDF will carry on for about 175 years, generating an average of 2,000 jobs in any given year.

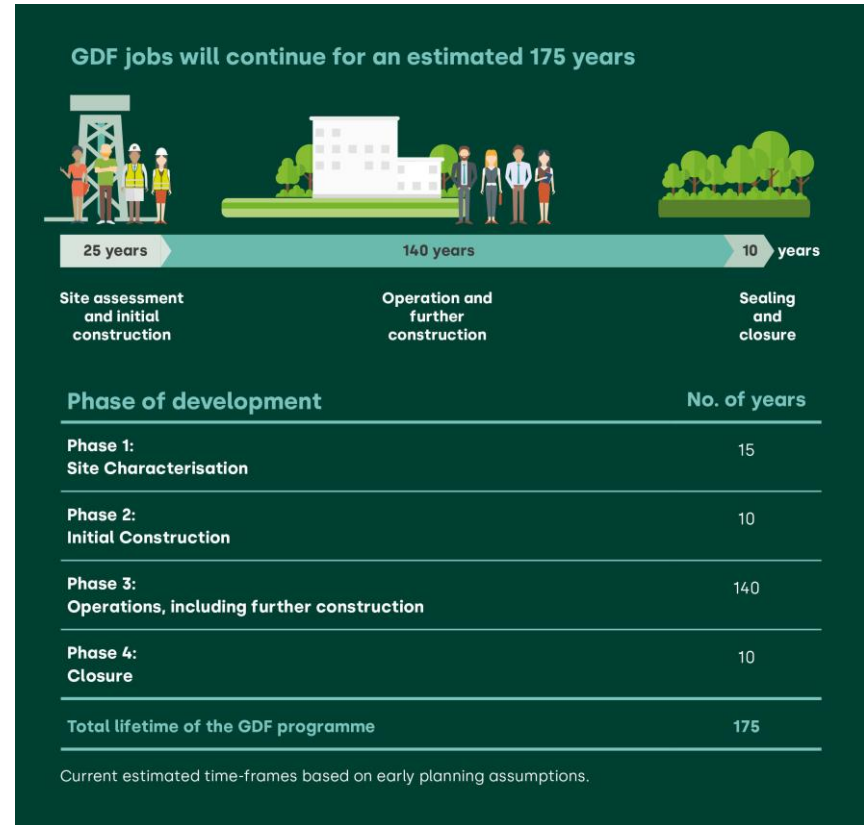
 75%

Wide range of skills

From construction, engineering and project management. 75% of roles are estimated to be for candidates with qualifications equivalent to A-Level and below.

Skills for generations

A Geological Disposal Facility (GDF) is estimated to generate an average of 2,000 jobs in any given year over the 175 year lifetime. It is expected to create more than 4,000 jobs within the first 25 years.



A wide range of skills

During the development, operations and closure of a GDF, roles will be needed at all levels, from jobs that don't require any qualifications to apprenticeships, graduates, and highly skilled and experienced specialists, creating thousands of skilled, well-paid roles across generations.



130

Engineering
Science and Technical



875

Trades



300

Project management,
Operations and
Business Function



75%

of roles will be for
candidates with
A-Levels or below

A breakdown of the estimated direct roles generated in the initial construction phase.

Delivering for the community and the country

A long-term infrastructure project like a GDF provides an opportunity to invest in and develop a vibrant and multi-skilled workforce.

Over its lifetime, it will generate reinvestment in the host community, ensuring the value of one of the UK's largest infrastructure projects is realised locally.

The GDF programme is about acting now to deliver for future generations. It will provide careers and lifelong, valuable skills for more than 100 years.



Our priority
Recruit locally



Our pledge
Use local contractors



Our support
Build local skills
and expertise