

Power, Pragmatism and Participation in the Siting of Nuclear Facilities

Professor Andrew Blowers OBE

Presentation to Nuleaf RWPG 18 July 2023



Sellafield

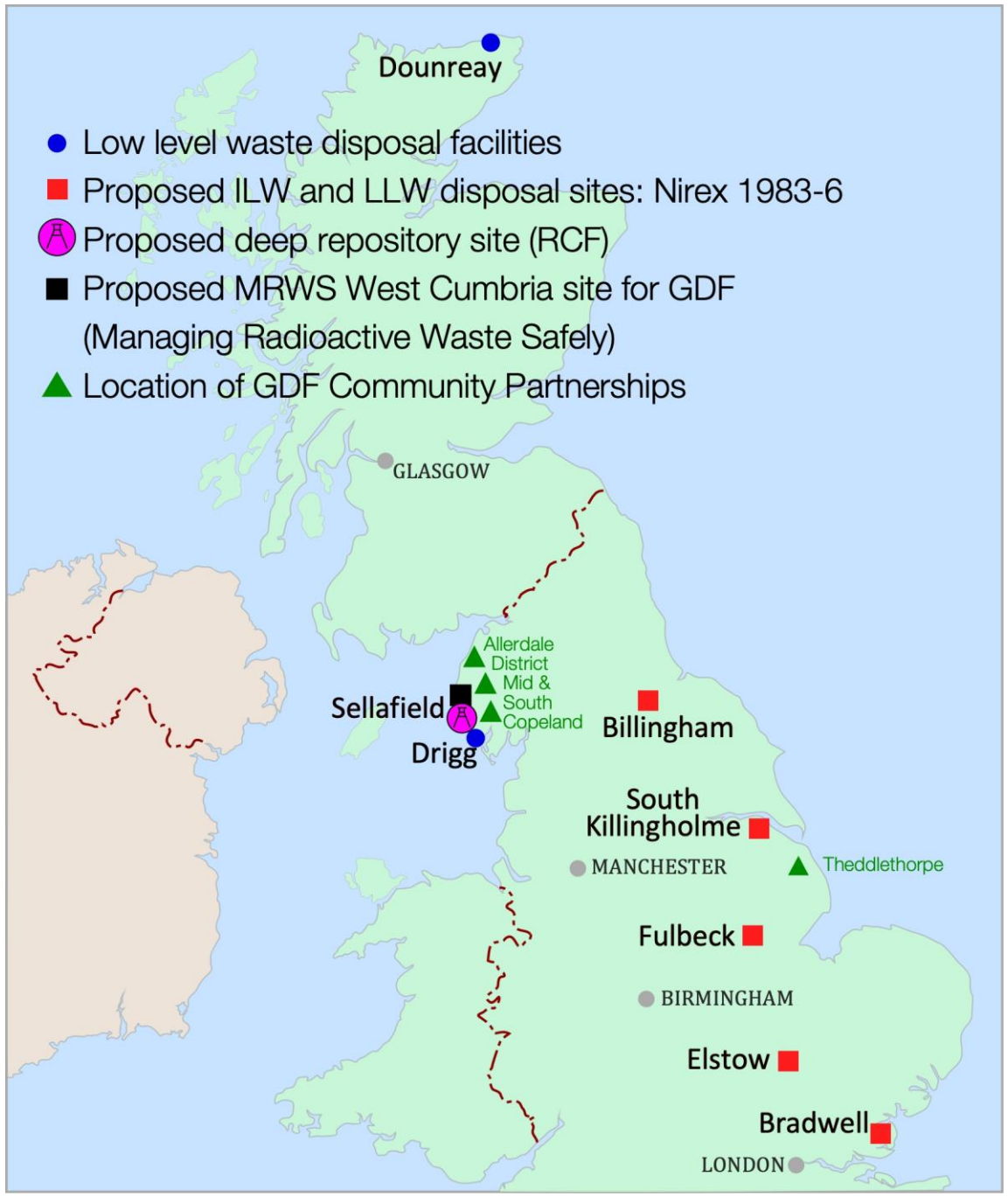


Sizewell B









- Low level waste disposal facilities
- Proposed ILW and LLW disposal sites: Nirex 1983-6
- ⓐ Proposed deep repository site (RCF)
- Proposed MRWS West Cumbria site for GDF (Managing Radioactive Waste Safely)
- ▲ Location of GDF Community Partnerships

Dounreay

GLASGOW

Sellafield

Drigg

Allerdale District
Mid & South
South Copeland

Billingham

South Killingholme

MANCHESTER

Theddlethorpe

Fulbeck

BIRMINGHAM

Elstow

Bradwell

LONDON



● Proposed sites for new reactors

GLASGOW

SCOTLAND

NORTHERN IRELAND

Moorside

Hartlepool

Heysham

Wylfa

MANCHESTER

BIRMINGHAM

ENGLAND

Sizewell

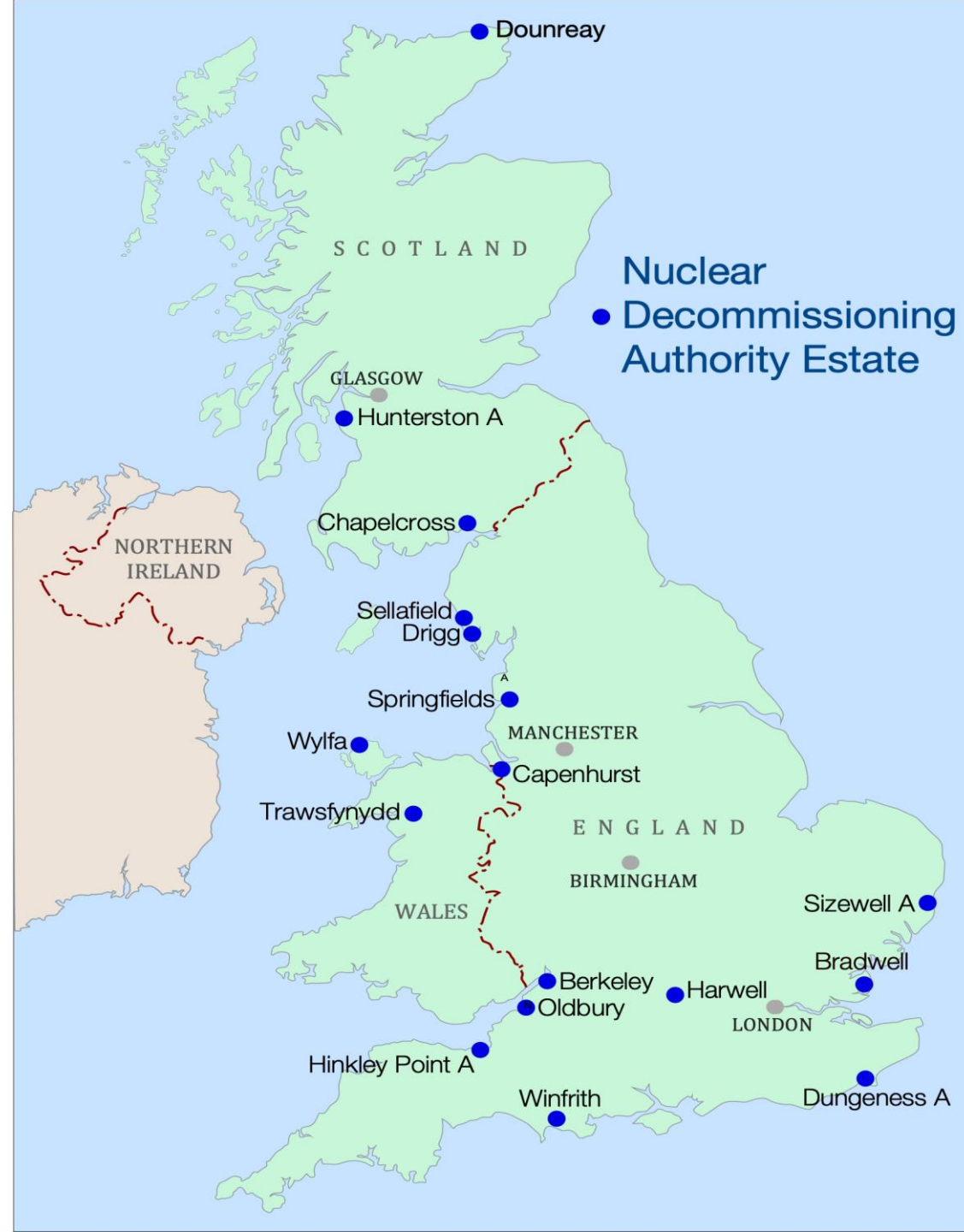
Bradwell

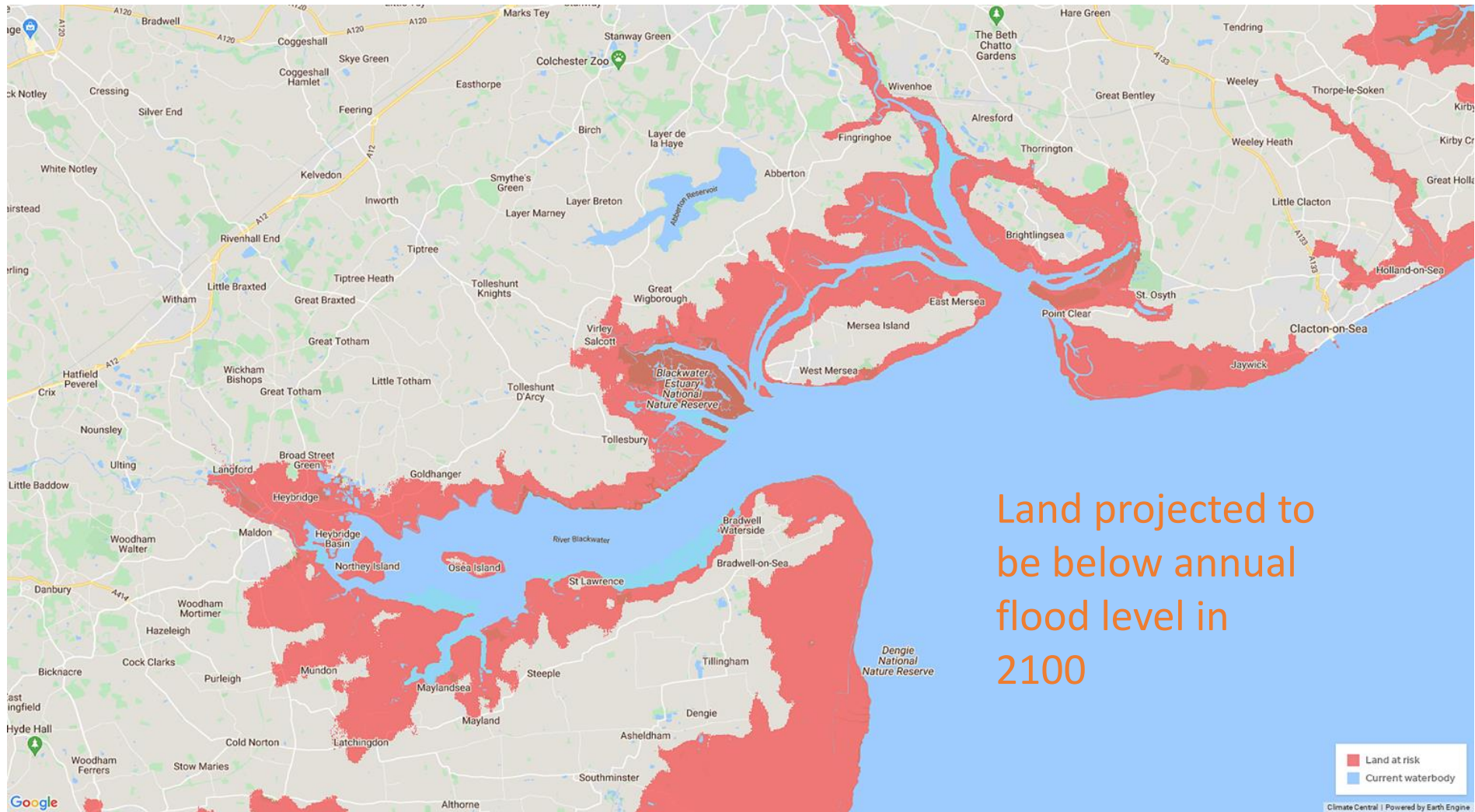
LONDON

Oldbury

Hinkley Point

Irish Sea





Land projected to be below annual flood level in 2100









THE LEGACY OF NUCLEAR POWER

ANDREW BLOWERS



