



The National Policy Statement for Geological Disposal Infrastructure

Nuclear Waste Services DCO Journey – January 2024

Ruth Letourneur

What we're covering:



GEOLOGICAL
DISPOSAL
INFRASTRUCTURE



THE NATIONAL POLICY
STATEMENT



UNIQUE CHALLENGES
TO NWS



OTHER REGULATORS?



QUESTIONS

The Planning Act 2008 – GDI is unique...

- Geological Disposal Infrastructure added into Planning Act 2008 in 2015
- Created a whole new category of NSIP – outside that which the Act was set up to cover
- Covers Geological Disposal *Infrastructure*
 - Boreholes over 150m for purposes of characterising a site for a GDF
 - A GDF for the final disposal of radioactive waste over 200m deep.

STATUTORY INSTRUMENTS

2015 No. 949

INFRASTRUCTURE PLANNING

The Infrastructure Planning (Radioactive Waste Geological Disposal Facilities) Order 2015

Made - - - - 26th March 2015

Coming into force - - 27th March 2015

The Secretary of State, in exercise of the powers conferred by sections 14(3) and (4) and 232(3) of the Planning Act 2008(a), makes the following Order.

A draft of this Order was laid before Parliament and approved by a resolution of each House of Parliament in accordance with section 232(6) of that Act.

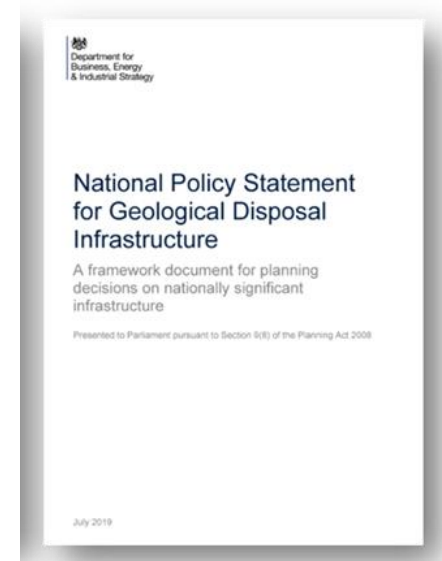
Citation, commencement and interpretation

1.—(1) This Order may be cited as the Infrastructure Planning (Radioactive Waste Geological Disposal Facilities) Order 2015 and comes into force on the day after the day on which it is made.

(2) In this Order, “the Act” means the Planning Act 2008.

National Policy Statement – interesting facts!

- A unique National Policy Statement – sits outside the Energy suite
- The creation of an NPS:
 - Consultation Jan – Apr 2018
 - Select Committee
 - Quality Review Panel
 - Laid in Parliament – July 2019 and duly designated (no legal challenge)
- Non site-specific
- Applies to anyone who wants to build a GDF!
- Set out the “needs” case



Unique challenges and opportunities

Allerdale GDF Community Partnership
Let's talk about geological disposal

Allerdale search area

Allerdale was assessed not to be a viable location for a GDF and exited the process

Illustrative map of one of two search areas identified by the Capeland GDF Working Group

- Onshore area for consideration
- Excluded from consideration, retains funding
- Inshore area for consideration
- Inshore area boundary
- Electoral ward boundary

Mid Copeland GDF Community Partnership

Mid Copeland Search Area
Gosforth & Seascale and Beckermert

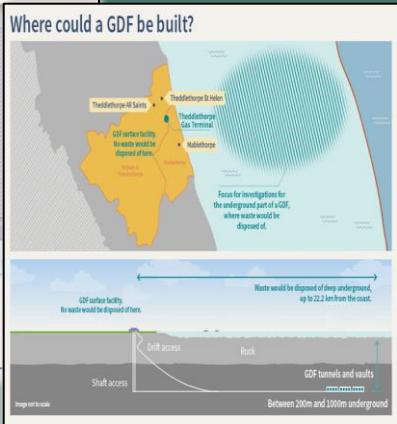


South Copeland GDF Community Partnership

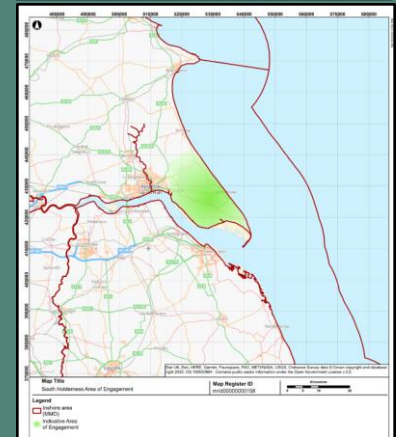
South Copeland Search Area
Millom & Black Combe and Scafell



Working in Partnership Theddlethorpe



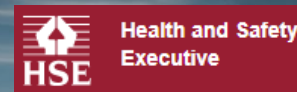
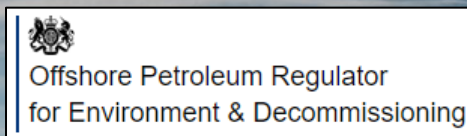
Working in Partnership South Holderness



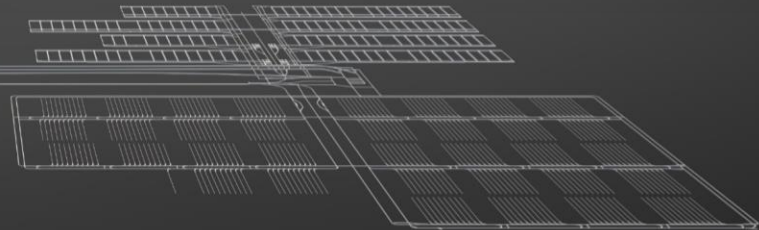
Intrusive Investigations



Multiple regulators depending on location and nature of the activities



These and others...



We're making progress

Working with
regulators

Looking at
consultation

Major
Permissions
Delivery Partner

Aerial Surveys

Looking at
consenting
options

Any questions?