



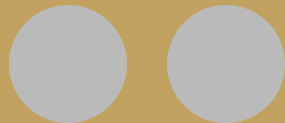
**CANHC**

Canadian Association of  
Nuclear Host Communities

# Developing host community agreements for SMRs

10 June 2025

Meritxell Martell, PhD



Report for the Canadian Association of  
Nuclear Host Communities (CANHC)

# Developing host community agreements for SMRs

---

Author: Meritxell Martell (Merience/GMF Europe)

Contributors from GMF Europe: Kris van Dijck (Belgium), Marinela Nikolova (Bulgaria), Miroslav Kristal (Czech Republic), Vesa Lakaniemi (Finland), ARCICEN (France), Csaba Dohóvski (Hungary), Gerben Dijksterhuis, Gilbert Lelyveld van Cingelshouck (Netherlands), Arancha Rosado, Pedro Sánchez (Spain), Igor Gogora, Denisa Belfiová, Eliska Svordova (Slovakia), Ales Benje (Slovenia), Asmund Bratekas (Norway), Fabian Sjöberg, Ted Linqvist (Sweden), Patrick Zimmermann (Switzerland), Philip Matthews (United Kingdom)

February 2025



# OBJECTIVES

- Overview of **current agreements** between municipalities hosting nuclear facilities and nuclear industry, governmental institutions and/or safety authorities
- Draw up **guidelines** to be considered in any agreement put forward to the potential candidate municipality to host an SMR

# 14 European countries analysed



# METHODOLOGY

- Literature review from international, national and regional/local sources
- Qualitative and quantitative data on existing agreements
- Presentations at the GMF General Assembly and exchanges with GMF members
- Follow up emails to validate and cross check information

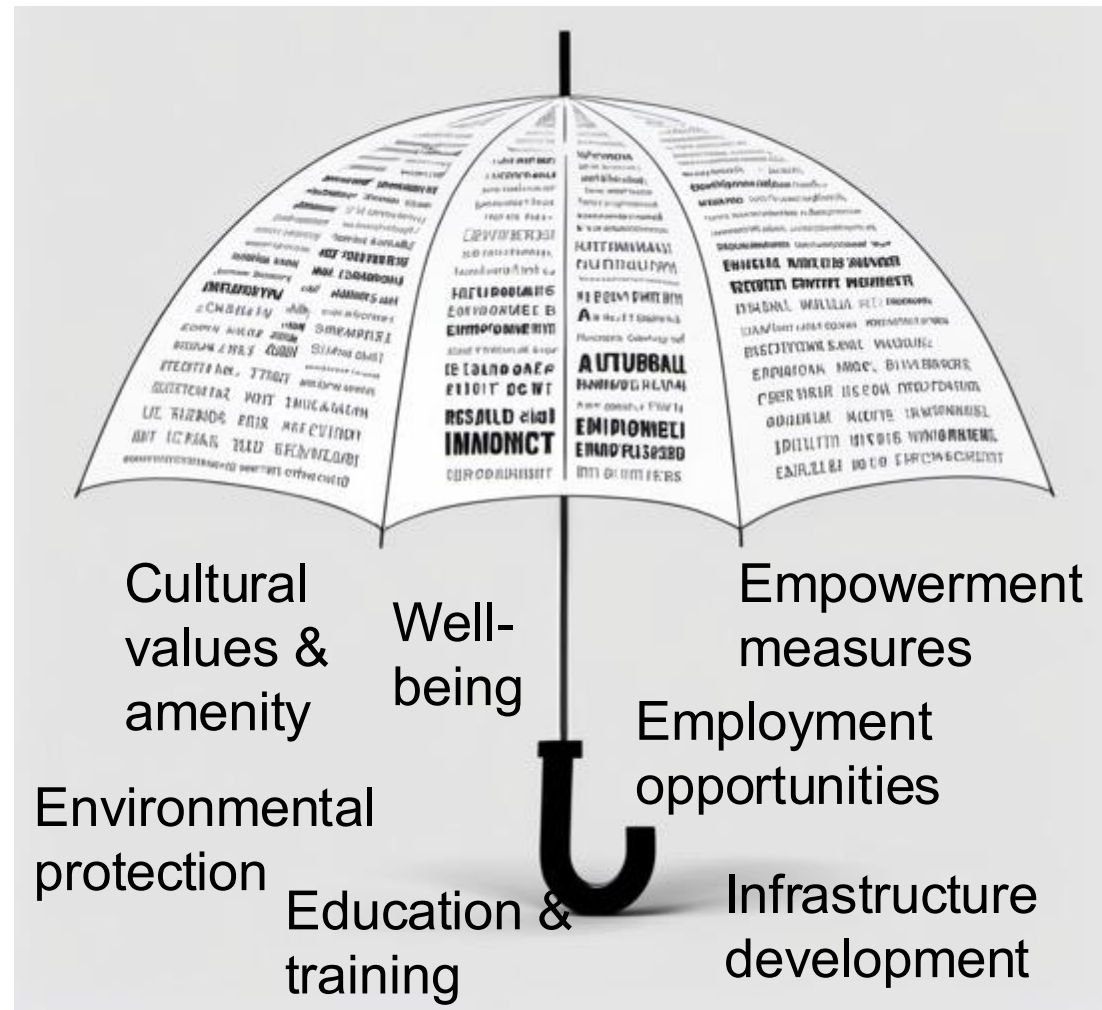
# SCOPE

- Nuclear power plants
- Deep disposal facilities of high level waste and/or spent fuel
- Disposal of low and intermediate level waste
- Storage facilities for diverse categories of waste
- Nuclear research reactors
- Underground research laboratories (URL)
- Various stages of implementation: operational, under construction or planned

# CONCEPTUAL FRAMEWORK

- Agreement instead of “compensation”
- Legally imposed approach vs locally negotiated approach
- Combination of incentives / benefits: a) financial; b) social in kind; c) community empowerment measures

# Added value approach



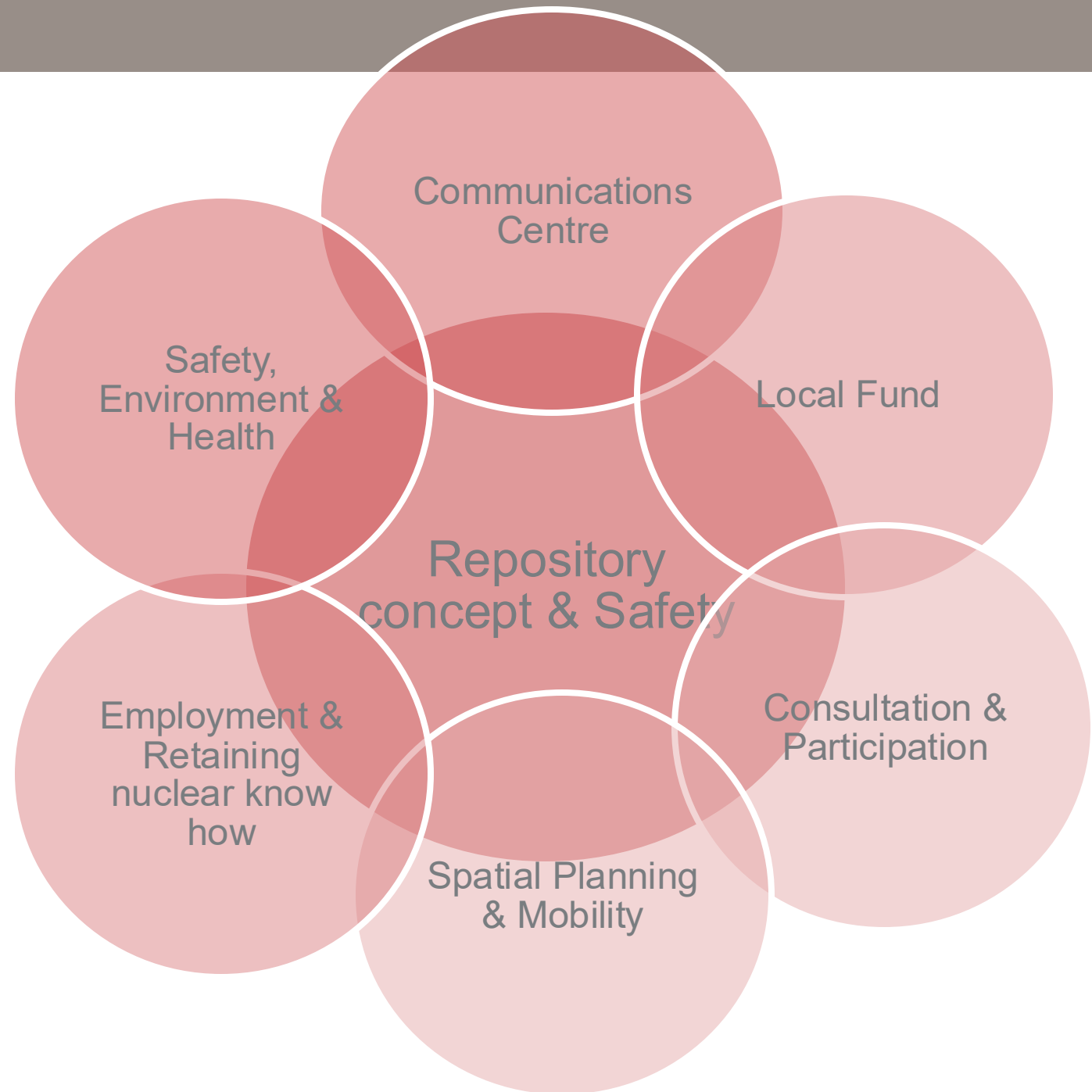
# Country examples



# Country examples



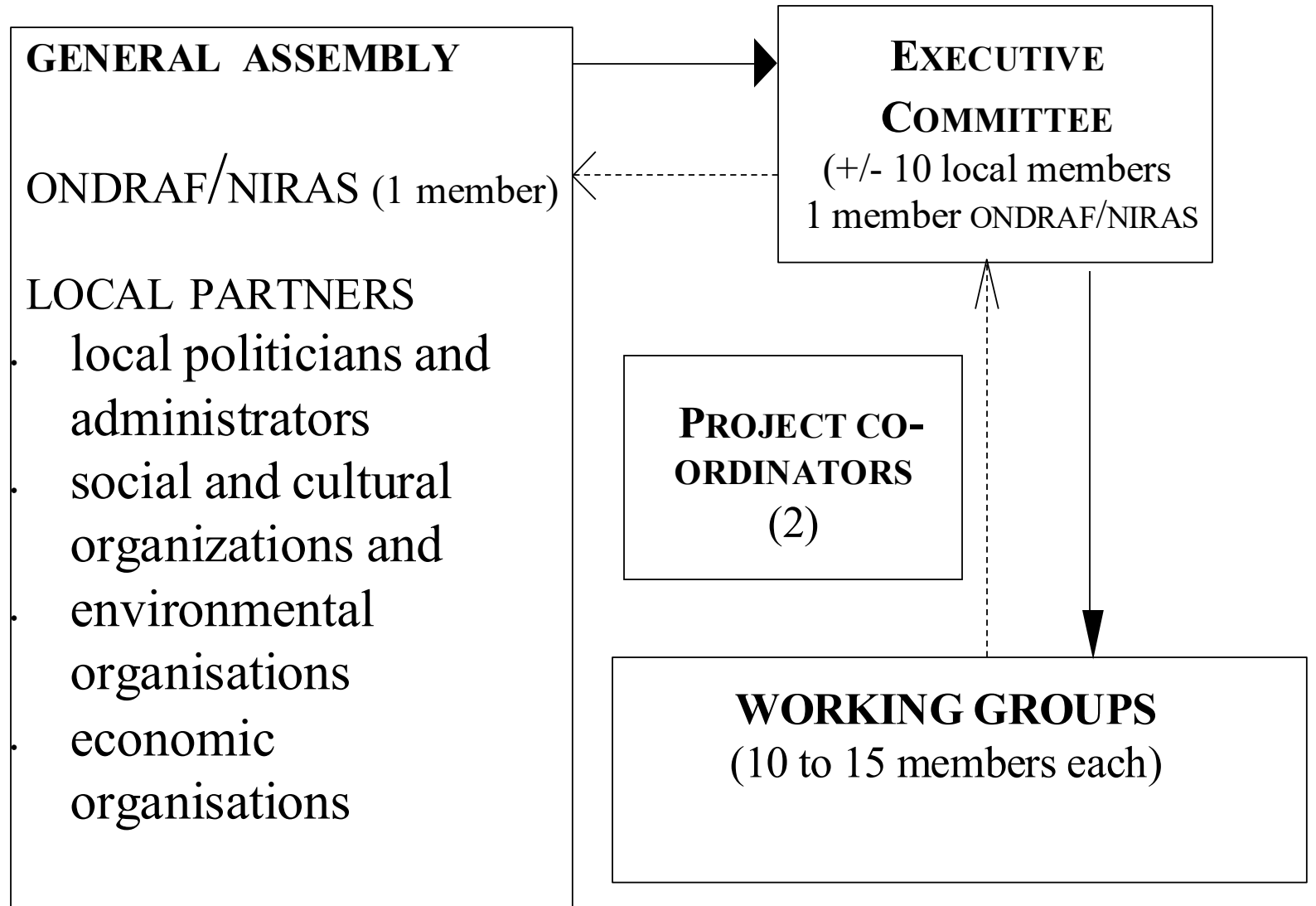
# Belgium Integrated disposal project for low and intermediate level waste



# A siting partnership as a non-profit organisation



**STO  
RA**



# Tabloo community and visitor centre



# Tabloo community and visitor centre



# 3xG study



# Country examples

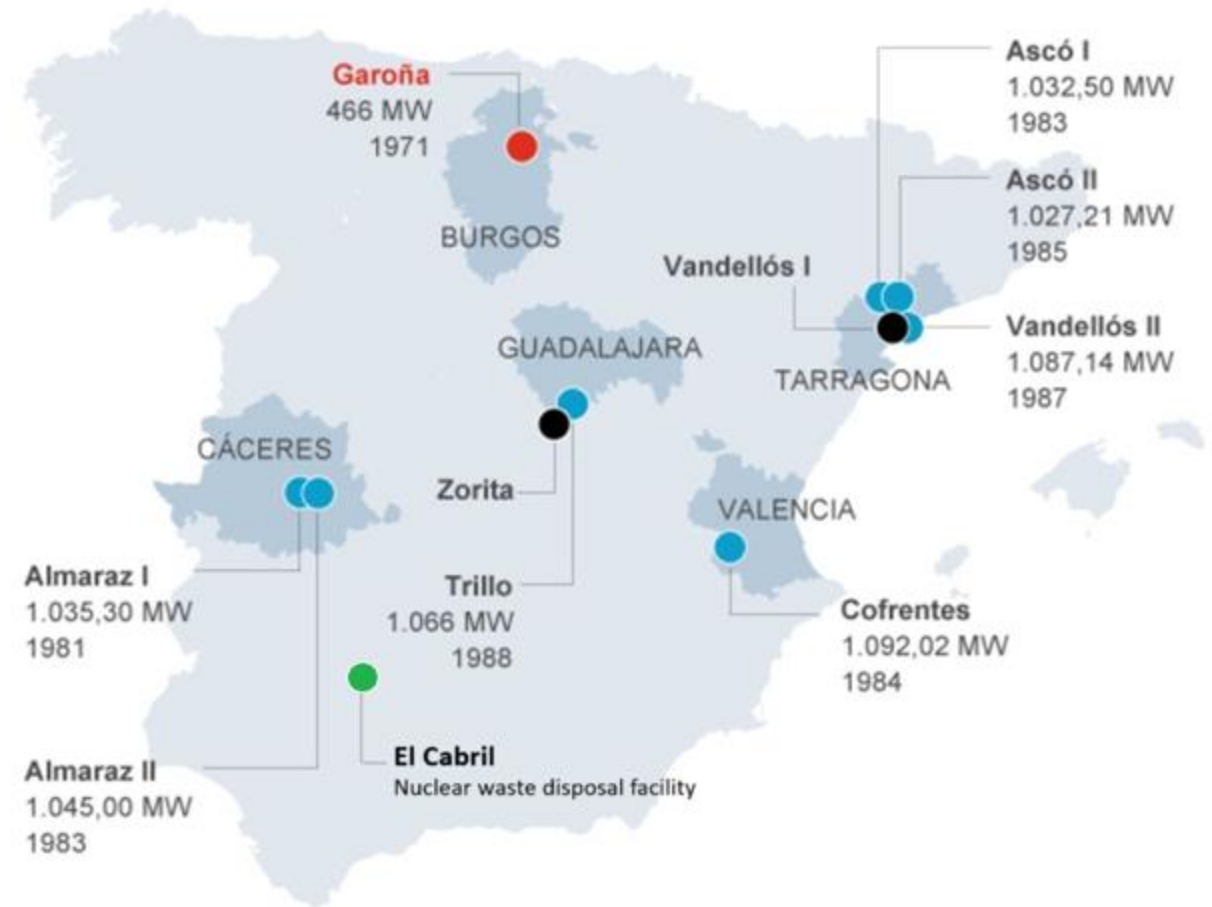


# Spain – taxes on nuclear installations

Tax on **real estate property** with special characteristics (€3-6 million per reactor per year)

Tax on **economic activities based on installed capacity** (distributed among 10 km around the NPP, but hosting municipality receives 75% of the total amount )

Tax on **constructions, installations and works** (4%)



# ENRESA fixed and variable financial allocations

**Fixed** – depending on the type of facility (spent fuel or LILW)

**Variable** – depends on the amount of waste



*Hornachuelos – hosting El Cabril*  
Revenue: 3,4 million €  
ENRESA allocation - 3,3 million €

## Three factors for allocations

Population

Distance from the facility

% of the municipality within the zone of influence of the facility

# ENRESA co-financed projects

To promote economic and social development in nuclear municipalities

## **Potential projects (priorities for funding change every year)**

Entrepreneurship promotion

Tourism and cultural development

Municipal infrastructure

Cultural heritage rehabilitation



# Just Transition Fund – support for municipalities under decommissioning



**Valle de Tobalina**

Renovation and rehabilitation of the Valle de Tobalina residence  
Grant: €2,997,522.77



**Lantarón**

Comprehensive renovation, environmental improvement, and enhancement of Sobrón  
Grant: €370,259.83



**Pancorbo**

Energy efficiency improvement and adaptation of the Casa de la Cultura for coworking use  
Grant: €525,881.57



## FINANCIAL INCENTIVES

- Lump sums or annual payments
- Local tax revenues (land, activity, property tax or a combination)
- Trust funds for future generations
- Reduction in electricity bills



## TRAINING & SKILLS

- Training schemes
- Agreements with research institutes, technology centres, subcontractors
- Training for local fire brigade, local companies, emergency responders

## AFFORDABLE HOUSING & LAND USE

- Spatial planning
- Social housing
- Property value protection



## COMMUNITY DEVELOPMENT

- Direct funding for community's priorities
- Health centres, hospitals, sports facilities, museums
- Community centres, libraries, schools
- Sponsorship grants



## QUALITY OF LIFE

- Mitigate local impacts (noise, traffic, landscape, nature conservation, etc)
- Infrastructure development
- Health monitoring programmes
- Cycling routes, recreation areas, boost tourism



## EMPLOYMENT & PROCUREMENT

- Direct employment opportunities
- Supply chain
- Jobs training
- Local procurement and subcontracting
- Investment loans for businesses

## INCLUSIVE DECISION MAKING & EMPOWERMENT

- Local monitoring groups
- Independent scientific advice and/or oversight
- Participation in decision making



# Steps for negotiating a community agreement

## 1. KNOWLEDGE OF THE COMMUNITY

Understanding of the legal, historical, socio-economic and cultural environment.



## 2. COMMUNITY CAPACITY

Secure resources that allow the community to become more knowledgeable and to build competences.



## 3. EARLY, INCLUSIVE ENGAGEMENT

Agree on engagement principles and processes, engagement objectives, tools and representation of vulnerable groups.



## 4. NEGOTIATE THE AGREEMENT

Clear goals, governance structures, provisions for review, contribution to social and economic development.



## 5. IMPLEMENT, MONITOR & REVIEW

Community groups can review the monitoring and review in order to improve the agreement, if needed.



# Guidelines for community agreements on SMRs

No one size fits all approach

Scarce agreements with regulatory authorities but extensive practice for operating NPPs and radioactive waste

For new nuclear, participatory practices in decision-making should be crucial



# Final remarks

Updating and broadening the information on host community agreements to facilitate knowledge sharing among municipalities

Creating a standardised framework for host community agreements tailored to SMRs and/or large nuclear reactors





## Hosting community agreements NWMO - Township of Ignace/South Bruce in the Deep Geological Repository Site selection process

### **36 principles:**

safety & the natural environment;  
people, community & culture;  
economics & finance; capacity building;  
services & infrastructure;  
governance & community engagement;  
regional benefits



## Hosting community agreements NWMO - Township of Ignace/South Bruce in the Deep Geological Repository Site selection process

### Financial benefits:

- Support payments related to (i) deliverable-driven engagement and (ii) capacity support and governance
- Benefits payments related to (i) infrastructure and community well-being and (ii) youth community training
- Operating payment
- Emplacement fee



# Hosting community agreements NWMO - Township of Ignace/South Bruce in the Deep Geological Repository Site selection process

Centre of expertise & Learn more centre

Housing & Infrastructure plan

Transportation Hub and Emergency Services Base

Implementation committee

\*\* “Exit payment” to compensate for the participation in the siting process

## Proposed hosting agreement by Lincolnshire County Council for the Geological Disposal Facility

Significant Additional Infrastructure based on strategic needs of the area  
(Community Vision)

- Flood Risk Management
- Transport
- Employment, education and skills
- Energy
- Natural Environment
- Economy

Thanks to all GMF  
members who contributed

**More information:**

Meritxell Martell  
meritxell.martell@merience.eu

gmf@gmfeurope.org

