

# Our Nuclear Family



Nuclear Operations manages the eight power stations in the UK nuclear fleet.

Five of our stations are generating low carbon power, whereas Hunterston, Hinkley Point B and Dungeness B have entered the defueling stage of operations, the first stage of decommissioning.



Nuclear Services provides technical expertise and support to each of its three licensees: Hinkley Point C, Sizewell C and Nuclear Operations.



EDF EPR Engineering UK develops EDF's nuclear expertise by assembling leading companies to support in the design, build and commissioning of our Hinkley Point C and Sizewell C projects.

It's a subsidiary of Edvance - part of the EDF group.



Hinkley Point C is our current nuclear new build project, that once built and operating is expected to power 6m homes.



Sizewell C is the UK's next mega nuclear construction project, and it will be a near-exact replica of Hinkley Point C.

The project moved into delivery mode in 2024 and construction is underway in Suffolk.

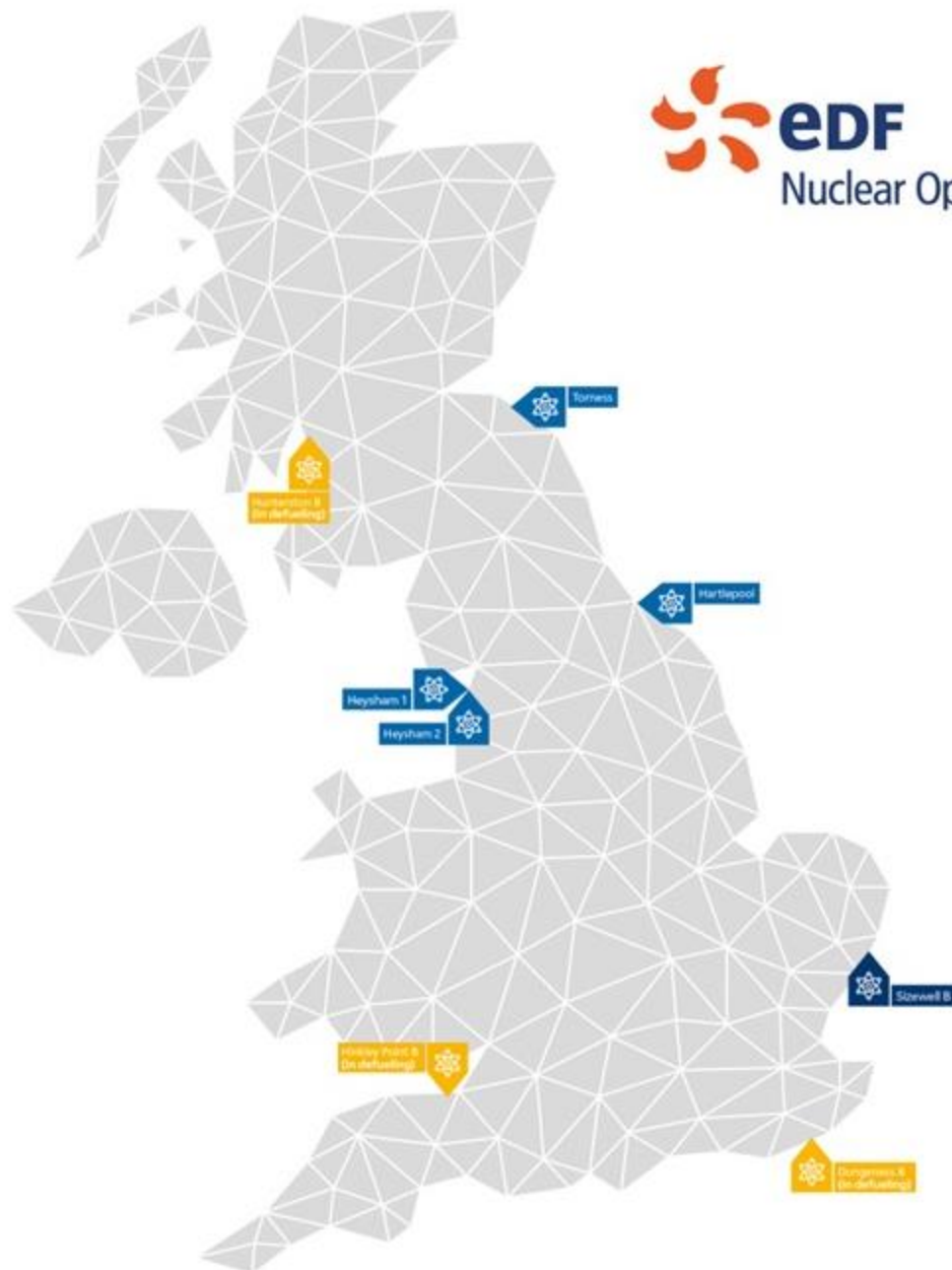
# Nuclear Operations



EDF Nuclear Operations, part of EDF's Nuclear family, manages eight nuclear power stations across the UK, five of which are generating zero carbon electricity and three that are now in the defueling phase, the first stage of decommissioning. We will continue to safely decommission our two coal stations, while helping the UK Atomic Energy Authority develop the fusion reactor planned at West Burton.

We are Britain's biggest generator of zero carbon electricity, providing approximately 13% of the UK's power and consumers depend upon us to provide electricity safely and reliably.

With approximately 5,000 people employed directly, and thousands more in the supply chain across the country, Nuclear Operations plays a key part in EDF's purpose in the UK.



1



## PRESSURISED WATER REACTOR

- Commissioned 1995
- Lifetime expectation 2035+

7



## AGR NUCLEAR STATIONS

- Commissioned 1976 - 1988
- Heysham 1 & 2, Hartlepool and Torness generating until 2027-30+
- Hunterston B, Hinkley Point B and Dungeness B are in the defueling stage

# MORE THAN POWER

The impact of our existing fleet...

Since 1976 the stations have generated more than **2,100TWh** of clean energy

This has avoided **1.1 billion** tonnes of CO<sub>2</sub>

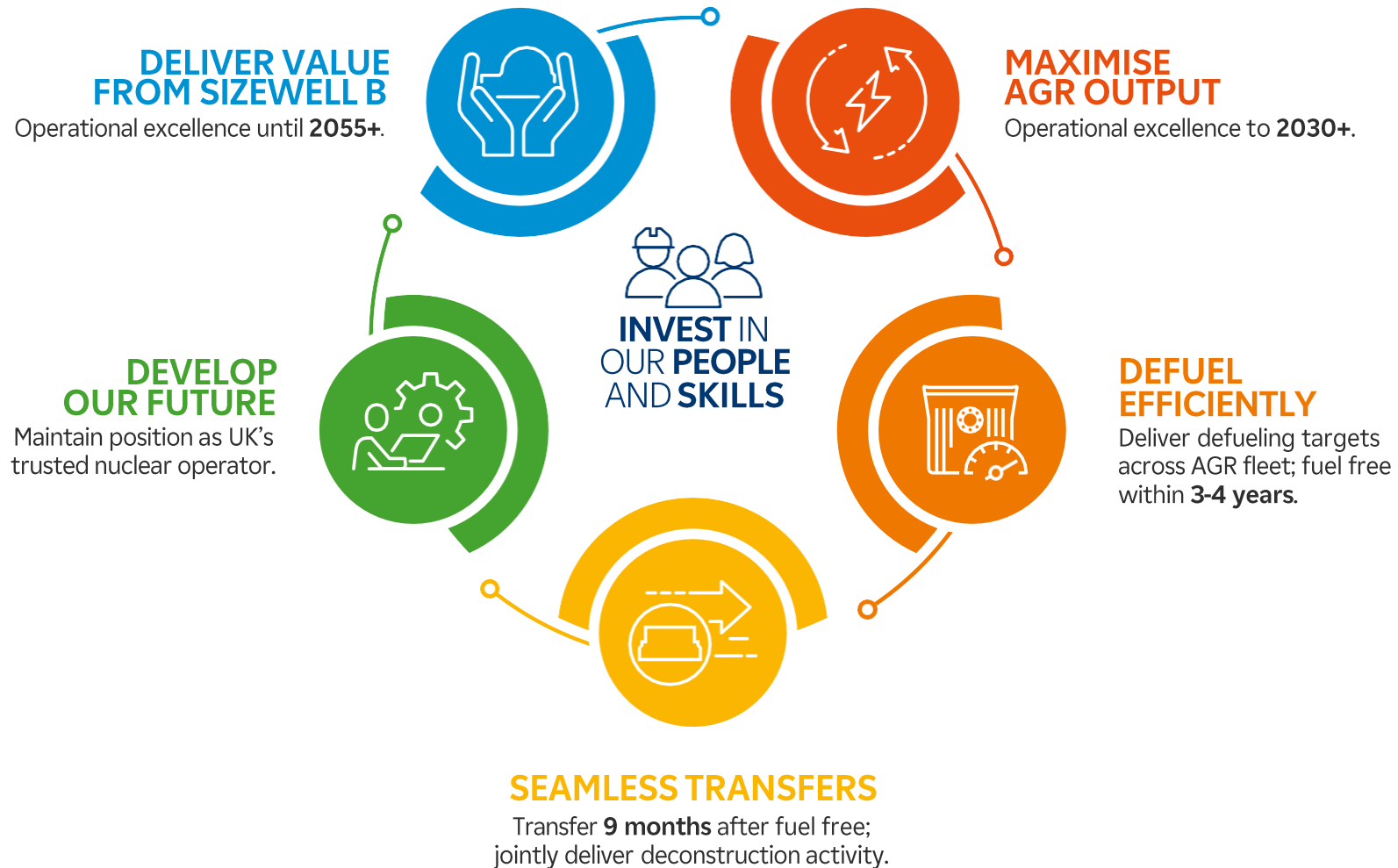
Our nuclear stations have contributed **more than £123bn** to the UK since 1976

During generation, the fleet supported an average of **31,000 UK jobs** a year

More than **90%** supply chain spend is in the UK

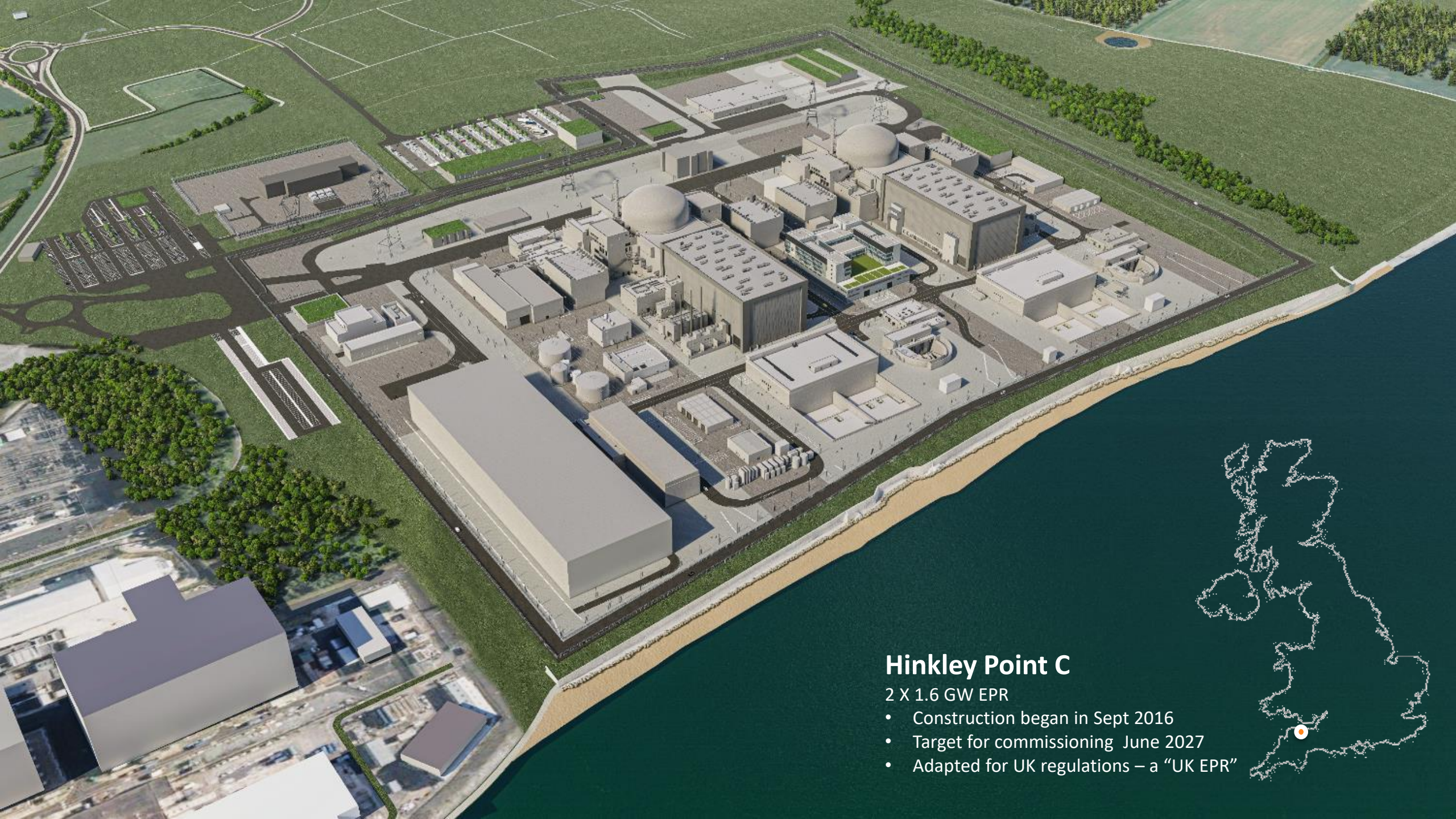


# Existing fleet - 10 year priorities



**Nuclear safety is our overriding priority**

**Helping Britain Achieve Net Zero**



## Hinkley Point C

2 X 1.6 GW EPR

- Construction began in Sept 2016
- Target for commissioning June 2027
- Adapted for UK regulations – a “UK EPR”



# Hinkley Point C: Exceeding our Commitments

- The immense scale of Hinkley Point C means that it can be a force for good and a catalyst for change.
- Our investment in people, skills and industrial capacity is driving growth across Britain, increasing productivity and giving thousands of people new skills and jobs.
- We have now far surpassed a number of commitments made on socio-economic impact when the project was proposed.
  - 1,520 apprentices trained against a target of 1,000
  - £5.3 billion spent in the region against a target of £1.5 billion
- Our investment to re-establish nuclear skills in Britain has paved the way for our twin project at Sizewell C, the development of small modular reactors and other low-carbon energy projects.
- We are helping Britain develop the expertise to deliver the infrastructure it needs for growth and future prosperity.



Letty, just one of 1,520 apprentices trained so far

**£13.3 billion**

↗ contribution to the British Economy<sup>1</sup>

**£4.2 billion**

↗ into Britain's growth-driving sectors<sup>1</sup>

**26,000**

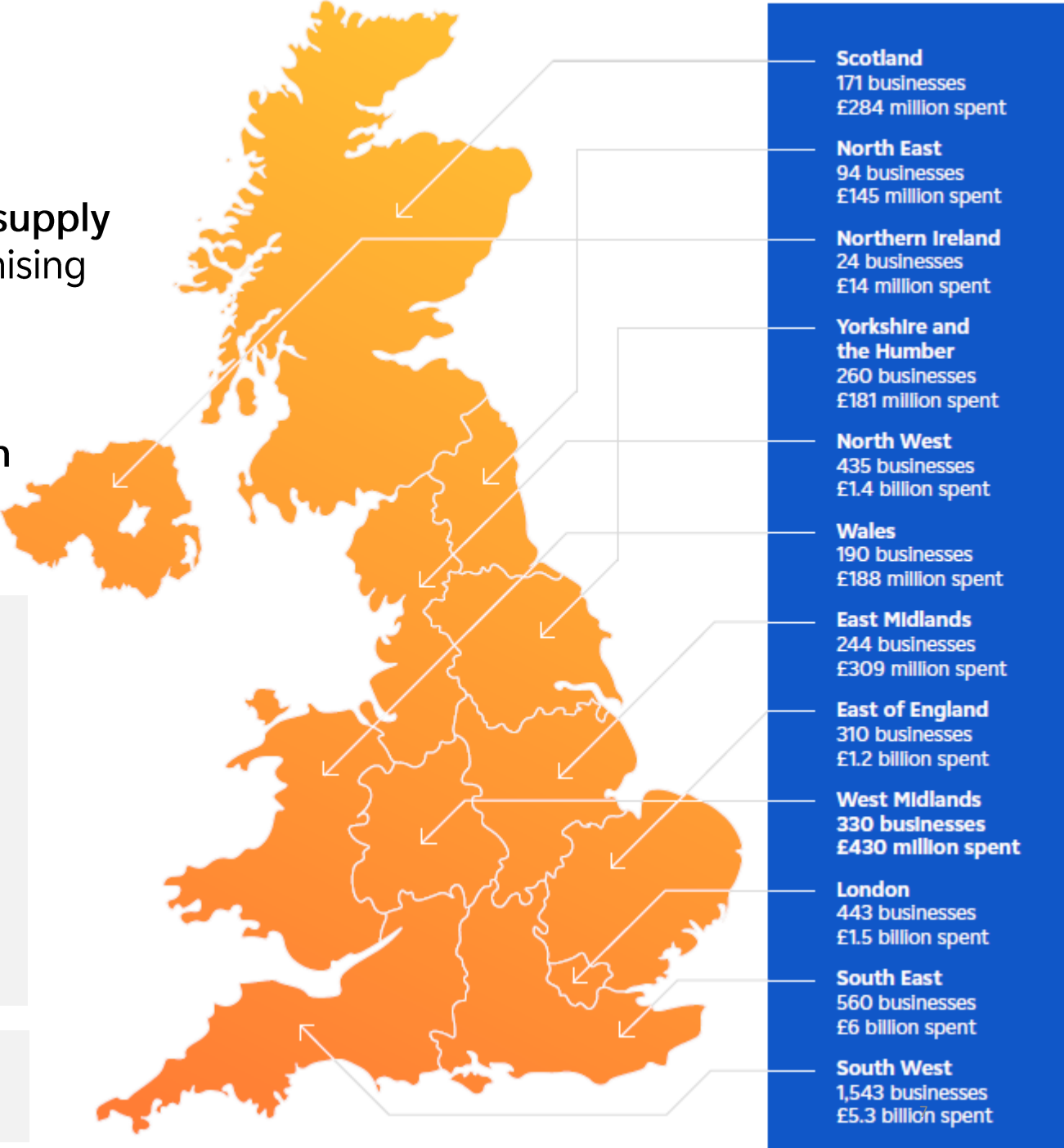
↗ direct and indirect jobs supported across Britain

**£24 million**

↗ investment into education and skills

# Economic: Supporting Britain's Industrial Strategy

- The project has helped British businesses into the supply chain for over a decade and has focussed on maximising local benefit.
- 64% of the value of the project going to British businesses with £5 billion already being spent with suppliers across with South West region.



**£13.3 billion**  
 into the British Economy in Gross Value Added

**4,600**  
 British businesses within the supply chain

**26,000**  
 direct and indirect jobs supported across Britain

**64%**  
 of the value of Hinkley Point C is currently with British businesses

**For every £1 spent by the project, a further £2.29 is generated in wider economic value within the South West**

# SIZEWELL C WILL BE UK-EPR UNITS 3 AND 4

## BUILDING ON LESSONS FROM HINKLEY POINT C UNITS 1+2

Sizewell C will be a UK-first: a replica of an existing new nuclear power station, which is already in construction.



Buildings shown **green** on the picture will copy the UK approved design of HPC showcasing the benefits of replication.

### Replication gains proven at Hinkley Point

#### Turbine Hall base slab concrete pour

30% quicker at Unit 2 than Unit 1



| Unit 1                | Unit 2               |
|-----------------------|----------------------|
| 12 pours in 10 months | 10 pours in 7 months |

#### Liner cup floor

30% quicker at Unit 2 than Unit 1



| Unit 1           | Unit 2           |
|------------------|------------------|
| 57 days to build | 39 days to build |

# CREATING A NEW BRITISH NUCLEAR COMPANY

Sizewell C  
The power of good for Britain

## £100bn

GVA over the project lifetime

## £2.5bn

CONTRACT VALUE SO FAR  
WITH UK SUPPLIERS

## 290

ACTIVE UK SUPPLIERS TO SIZEWELL C

### SIZEWELL C HAS CREATED A NEW UK- HEADQUARTERED AND UK- OWNED NUCLEAR COMPANY

New National HQ in London (March) Northern Hub in Manchester (May)

### BUILDING A POWER STATION AND A SUPPLY CHAIN CONSORTIUM WITH UK COMPANIES

70% of content to be awarded to UK suppliers

### CREATING A NEW UK NUCLEAR POWER STATION OPERATOR TO RUN SIZEWELL C

Beyond construction, creating a new operator for nuclear power stations - the first time this has been done since the CEGB